



[Go to Product page](#)

Datasheet for ABIN6745062
anti-TCTEX1D4 antibody (C-Term)

1 Image

Overview

Quantity:	100 µL
Target:	TCTEX1D4
Binding Specificity:	C-Term
Reactivity:	Human, Monkey
Host:	Rabbit
Clonality:	Polyclonal
Conjugate:	This TCTEX1D4 antibody is un-conjugated
Application:	Western Blotting (WB)

Product Details

Immunogen:	Synthetic peptide from C-Terminus of human TCTEX1D4 (Q5JR98, NP_001013654). Percent identity by BLAST analysis: Human, Chimpanzee, Gorilla, Gibbon, Monkey (100%), Marmoset (85%). Type of Immunogen: Synthetic peptide
Specificity:	Human TCTEX1D4
Predicted Reactivity:	Percent identity by BLAST analysis:
Purification:	Immunoaffinity purified

Target Details

Target:	TCTEX1D4
---------	----------

Target Details

Alternative Name:	TCTEX1D4 (TCTEX1D4 Products)
Background:	Name/Gene ID: TCTEX1D4 Synonyms: TCTEX1D4, Protein N22.1, Tctex1 domain containing 4, Tctex-2-beta, Tctex2 beta
Gene ID:	343521
NCBI Accession:	NP_001013654
UniProt:	Q5JR98

Application Details

Application Notes:	Approved: WB (0.2 - 1 µg/mL) Usage: Western Blot: Suggested dilution at 1 µg/mL in 5 % skim milk / PBS buffer, and HRP conjugated anti-Rabbit IgG should be diluted in 1: 50,000 - 100,000 as secondary antibody.
Comment:	Target Species of Antibody: Human
Restrictions:	For Research Use only

Handling

Format:	Lyophilized
Reconstitution:	Distilled water
Concentration:	Lot specific
Buffer:	Lyophilized from PBS with 2 % sucrose
Handling Advice:	Avoid repeat freeze-thaw cycles.
Storage:	4 °C,-20 °C
Storage Comment:	Long term: -20°C, the use of 50% glycerol is recommended if storing aliquots in -20°C for long term use (up to 1 year) Short term (less than 1 week): 4°C. Avoid freeze-thaw cycles.

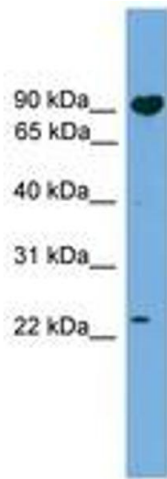


Image 1.