



Datasheet for ABIN6745065
anti-KCTD21 antibody (AA 143-192)



[Go to Product page](#)

1 Image

Overview

Quantity:	100 µL
Target:	KCTD21
Binding Specificity:	AA 143-192
Reactivity:	Human, Mouse, Rat, Rabbit, Cow, Dog, Guinea Pig, Horse, Goat, Pig, Bat, Hamster, Monkey
Host:	Rabbit
Clonality:	Polyclonal
Conjugate:	This KCTD21 antibody is un-conjugated
Application:	Western Blotting (WB)

Product Details

Immunogen:	Synthetic peptide located between aa143-192 of human KCTD21 (Q4G0X4, NP_001025030). Percent identity by BLAST analysis: Human, Chimpanzee, Gorilla, Monkey, Galago, Marmoset, Mouse, Rat, Goat, Hamster, Elephant, Dog, Bovine, Bat, Rabbit, Horse, Pig, Guinea pig (100%), Opossum, Turkey, Zebra finch, Chicken, Platypus (85%). Type of Immunogen: Synthetic peptide
Specificity:	Human KCTD21
Predicted Reactivity:	Percent identity by BLAST analysis: Mouse, Rat, Dog, Bovine, Goat, Guinea pig (100%) Chicken (85%).
Purification:	Immunoaffinity purified

Target Details

Target:	KCTD21
Alternative Name:	KCTD21 (KCTD21 Products)
Background:	Name/Gene ID: KCTD21 Synonyms: KCTD21, KCASH2
Gene ID:	283219
NCBI Accession:	NP_001025030
UniProt:	Q4G0X4

Application Details

Application Notes:	Approved: WB (0.2 - 1 µg/mL) Usage: Western Blot: Suggested dilution at 1 µg/mL in 5 % skim milk / PBS buffer, and HRP conjugated anti-Rabbit IgG should be diluted in 1: 50,000 - 100,000 as secondary antibody.
Comment:	Target Species of Antibody: Human
Restrictions:	For Research Use only

Handling

Format:	Lyophilized
Reconstitution:	Distilled water
Concentration:	Lot specific
Buffer:	Lyophilized from PBS with 2 % sucrose
Handling Advice:	Avoid repeat freeze-thaw cycles.
Storage:	4 °C, -20 °C
Storage Comment:	Long term: -20°C, the use of 50% glycerol is recommended if storing aliquots in -20°C for long term use (up to 1 year) Short term (less than 1 week): 4°C. Avoid freeze-thaw cycles.

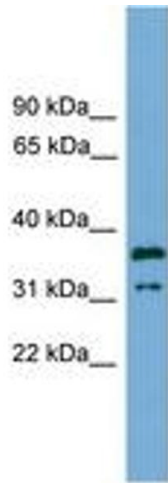


Image 1.