



[Go to Product page](#)

Datasheet for ABIN6745077  
**anti-DAPP1 antibody (AA 71-120)**

1 Image

Overview

Quantity:	100 µL
Target:	DAPP1
Binding Specificity:	AA 71-120
Reactivity:	Human, Mouse, Rat, Cow, Dog, Guinea Pig, Horse, Rabbit, Zebrafish (Danio rerio), Monkey, Bat, Pig
Host:	Rabbit
Clonality:	Polyclonal
Conjugate:	This DAPP1 antibody is un-conjugated
Application:	Western Blotting (WB)

Product Details

Immunogen:	Synthetic peptide located between aa71-120 of human DAPP1 (Q9UN19, NP_055210). Percent identity by BLAST analysis: Human, Chimpanzee, Gorilla, Gibbon, Monkey, Galago, Marmoset, Mouse, Rat, Elephant, Panda, Dog, Bovine, Bat, Rabbit, Horse, Pig, Guinea pig, Salmon, Stickleback, Zebrafish (100%), Opossum, Turkey, Chicken (92%), Platypus (91%), Zebra finch (85%).  Type of Immunogen: Synthetic peptide
Specificity:	Human DAPP1
Predicted Reactivity:	Percent identity by BLAST analysis: Human, Mouse, Rat, Dog, Bovine, Rabbit, Pig, Zebrafish (100%) Chicken (92%).

## Product Details

---

Purification: Immunoaffinity purified

## Target Details

---

Target: DAPP1

Alternative Name: DAPP1 / BAM32 ([DAPP1 Products](#))

Background: Name/Gene ID: DAPP1

Synonyms: DAPP1, BAM32, HDAPP1

Gene ID: 27071

NCBI Accession: [NP\\_055210](#)

UniProt: [Q9UN19](#)

Pathways: [BCR Signaling](#)

## Application Details

---

Application Notes: Approved: WB (0.2 - 1 µg/mL)

Usage: Western Blot: Suggested dilution at 1 µg/mL in 5 % skim milk / PBS buffer, and HRP conjugated anti-Rabbit IgG should be diluted in 1: 50,000 - 100,000 as secondary antibody.

Comment: Target Species of Antibody: Human

Restrictions: For Research Use only

## Handling

---

Format: Lyophilized

Reconstitution: Distilled water

Concentration: Lot specific

Buffer: Lyophilized from PBS with 2 % sucrose

Handling Advice: Avoid repeat freeze-thaw cycles.

Storage: 4 °C, -20 °C

Storage Comment: Long term: -20°C, the use of 50% glycerol is recommended if storing aliquots in -20°C for long term use (up to 1 year)

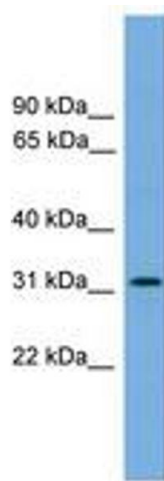
## Handling

---

Short term (less than 1 week): 4°C. Avoid freeze-thaw cycles.

## Images

---



**Image 1.**