



[Go to Product page](#)

Datasheet for ABIN6745083
anti-STK38L antibody (AA 395-444)

1 Image

Overview

Quantity:	100 µL
Target:	STK38L
Binding Specificity:	AA 395-444
Reactivity:	Human, Mouse, Rat, Dog, Cow, Horse, Monkey, Rabbit, Bat, Hamster
Host:	Rabbit
Clonality:	Polyclonal
Conjugate:	This STK38L antibody is un-conjugated
Application:	Western Blotting (WB)

Product Details

Immunogen:	Synthetic peptide located between aa395-444 of human STK38L (Q9Y2H1, NP_055815). Percent identity by BLAST analysis: Human, Chimpanzee, Gibbon, Monkey, Galago, Mouse, Rat, Hamster, Elephant, Panda, Dog, Bovine, Bat, Rabbit, Horse, Opossum, Turkey, Zebra finch, Lizard (100%), Chicken (82%). Type of Immunogen: Synthetic peptide
Specificity:	Human STK38L
Predicted Reactivity:	Percent identity by BLAST analysis: Human, Mouse, Rat, Dog, Bovine, Rabbit, Horse (100%) Chicken (82%).
Purification:	Immunoaffinity purified

Target Details

Target:	STK38L
Alternative Name:	STK38L / NDR2 (STK38L Products)
Background:	Name/Gene ID: STK38L Subfamily: NDR/LATS Family: Protein Kinase Synonyms: STK38L, KIAA0965, NDR2 protein kinase, Nuclear Dbf2-related kinase 2, Nuclear Dbf2-related 2, NDR2
Gene ID:	23012
NCBI Accession:	NP_055815
UniProt:	Q9Y2H1

Application Details

Application Notes:	Approved: WB (0.2 - 1 µg/mL) Usage: Western Blot: Suggested dilution at 1 µg/mL in 5 % skim milk / PBS buffer, and HRP conjugated anti-Rabbit IgG should be diluted in 1: 50,000 - 100,000 as secondary antibody.
Comment:	Target Species of Antibody: Human
Restrictions:	For Research Use only

Handling

Format:	Lyophilized
Reconstitution:	Distilled water
Concentration:	Lot specific
Buffer:	Lyophilized from PBS with 2 % sucrose
Handling Advice:	Avoid repeat freeze-thaw cycles.
Storage:	4 °C, -20 °C
Storage Comment:	Long term: -20°C, the use of 50% glycerol is recommended if storing aliquots in -20°C for long term use (up to 1 year) Short term (less than 1 week): 4°C. Avoid freeze-thaw cycles.

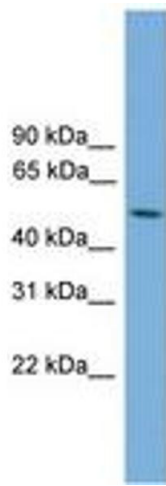


Image 1.