



[Go to Product page](#)

Datasheet for ABIN6745087

## anti-C1orf144 antibody (N-Term)

### 1 Image

#### Overview

Quantity:	100 µL
Target:	C1orf144
Binding Specificity:	N-Term
Reactivity:	Human, Mouse, Rat, Dog, Monkey
Host:	Rabbit
Clonality:	Polyclonal
Conjugate:	This C1orf144 antibody is un-conjugated
Application:	Western Blotting (WB)

#### Product Details

Immunogen:	Synthetic peptide from N-Terminus of human SZRD1 (Q7Z422-4). Percent identity by BLAST analysis: Human, Chimpanzee, Orangutan, Marmoset, Mouse, Rat, Dog (100%), Bovine (92%). Type of Immunogen: Synthetic peptide
Specificity:	Human C1orf144
Predicted Reactivity:	Percent identity by BLAST analysis: Dog (100%) Human (92%).
Purification:	Immunoaffinity purified

#### Target Details

Target:	C1orf144
Alternative Name:	SZRD1 / C1orf144 ( <a href="#">C1orf144 Products</a> )

## Target Details

---

Background:	Name/Gene ID: SZRD1  Synonyms: SZRD1, C1orf144, UPF0485 protein C1orf144
Gene ID:	26099
UniProt:	<a href="#">Q7Z422</a>

## Application Details

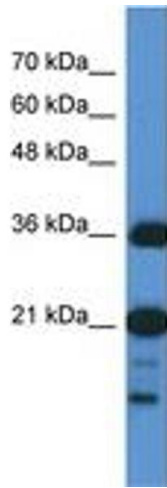
---

Application Notes:	Approved: WB (0.2 - 1 µg/mL)  Usage: Western Blot: Suggested dilution at 1 µg/mL in 5 % skim milk / PBS buffer, and HRP conjugated anti-Rabbit IgG should be diluted in 1: 50,000 - 100,000 as secondary antibody.
Comment:	Target Species of Antibody: Human
Restrictions:	For Research Use only

## Handling

---

Format:	Lyophilized
Reconstitution:	Distilled water
Concentration:	Lot specific
Buffer:	Lyophilized from PBS with 2 % sucrose
Handling Advice:	Avoid repeat freeze-thaw cycles.
Storage:	4 °C,-20 °C
Storage Comment:	Long term: -20°C, the use of 50% glycerol is recommended if storing aliquots in -20°C for long term use (up to 1 year)  Short term (less than 1 week): 4°C. Avoid freeze-thaw cycles.



**Image 1.**