



Datasheet for ABIN6745093  
**anti-GSPT1 antibody (AA 395-444)**



[Go to Product page](#)

1 Image

Overview

Quantity:	100 µL
Target:	GSPT1
Binding Specificity:	AA 395-444
Reactivity:	Human, Mouse, Pig, Dog, Hamster, Bat
Host:	Rabbit
Clonality:	Polyclonal
Conjugate:	This GSPT1 antibody is un-conjugated
Application:	Western Blotting (WB)

Product Details

Immunogen:	Synthetic peptide located between aa395-444 of human GSPT2 (Q8IYD1, NP_060564). Percent identity by BLAST analysis: Human, Chimpanzee, Orangutan, Galago, Marmoset, Mouse, Hamster, Elephant, Panda, Dog, Bat, Pig (100%), Gorilla, Gibbon, Monkey, Rat, Bovine, Rabbit, Horse, Opossum, Turkey, Chicken, Platypus (92%), Guinea pig, Xenopus, Zebrafish (85%).  Type of Immunogen: Synthetic peptide
Specificity:	Human GSPT2
Predicted Reactivity:	Percent identity by BLAST analysis: Human, Dog (100%).
Purification:	Immunoaffinity purified

## Target Details

---

Target:	GSPT1
Alternative Name:	GSPT ( <a href="#">GSPT1 Products</a> )
Background:	Name/Gene ID: GSPT  Synonyms: GSPT
NCBI Accession:	<a href="#">NP_060564</a>

## Application Details

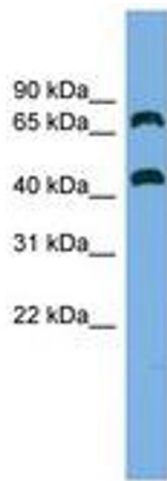
---

Application Notes:	Approved: WB (0.2 - 1 µg/mL)  Usage: Western Blot: Suggested dilution at 1 µg/mL in 5 % skim milk / PBS buffer, and HRP conjugated anti-Rabbit IgG should be diluted in 1: 50,000 - 100,000 as secondary antibody.
Comment:	Target Species of Antibody: Human
Restrictions:	For Research Use only

## Handling

---

Format:	Lyophilized
Reconstitution:	Distilled water
Concentration:	Lot specific
Buffer:	Lyophilized from PBS with 2 % sucrose
Handling Advice:	Avoid repeat freeze-thaw cycles.
Storage:	4 °C, -20 °C
Storage Comment:	Long term: -20°C, the use of 50% glycerol is recommended if storing aliquots in -20°C for long term use (up to 1 year) Short term (less than 1 week): 4°C. Avoid freeze-thaw cycles.



**Image 1.**