



[Go to Product page](#)

Datasheet for ABIN6745107

anti-Glycerol Kinase antibody (C-Term)

1 Image

Overview

Quantity:	100 µL
Target:	Glycerol Kinase (GK)
Binding Specificity:	C-Term
Reactivity:	Human, Mouse, Rat, Cow, Dog, Rabbit, Guinea Pig, Horse, Pig, Monkey
Host:	Rabbit
Clonality:	Polyclonal
Conjugate:	This Glycerol Kinase antibody is un-conjugated
Application:	Western Blotting (WB)

Product Details

Immunogen:	Synthetic peptide from C-Terminus of human GK (A6NJP5, NP_976325). Percent identity by BLAST analysis: Human, Chimpanzee, Gorilla, Orangutan, Gibbon, Monkey, Galago, Marmoset, Mouse, Rat, Dog, Bovine, Rabbit, Horse, Pig, Opossum, Guinea pig (100%), Hamster, Elephant, Bat (92%), Panda, Zebra finch, Chicken, Platypus, Xenopus, Salmon (84%). Type of Immunogen: Synthetic peptide
Specificity:	Human GK / Glycerol Kinase
Predicted Reactivity:	Percent identity by BLAST analysis: Human, Rat, Dog, Pig, Guinea pig (100%) Bovine (85%) Chicken, Xenopus (84%).
Purification:	Immunoaffinity purified

Target Details

Target:	Glycerol Kinase (GK)
Alternative Name:	GK / Glycerol Kinase (GK Products)
Background:	Name/Gene ID: GK Family: Non-protein Kinase Synonyms: GK, GKD, GK1, Glycerokinase, Glycerol kinase
Gene ID:	2710
NCBI Accession:	NP_976325
UniProt:	P32189

Application Details

Application Notes:	Approved: WB (0.2 - 1 µg/mL) Usage: Western Blot: Suggested dilution at 1 µg/mL in 5 % skim milk / PBS buffer, and HRP conjugated anti-Rabbit IgG should be diluted in 1: 50,000 - 100,000 as secondary antibody.
Comment:	Target Species of Antibody: Human
Restrictions:	For Research Use only

Handling

Format:	Lyophilized
Reconstitution:	Distilled water
Concentration:	Lot specific
Buffer:	Lyophilized from PBS with 2 % sucrose
Handling Advice:	Avoid repeat freeze-thaw cycles.
Storage:	4 °C, -20 °C
Storage Comment:	Long term: -20°C, the use of 50% glycerol is recommended if storing aliquots in -20°C for long term use (up to 1 year) Short term (less than 1 week): 4°C. Avoid freeze-thaw cycles.

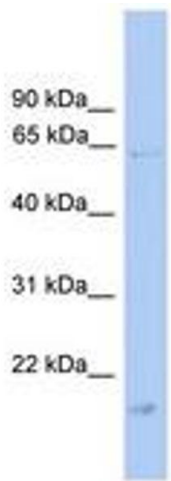


Image 1.