



[Go to Product page](#)

Datasheet for ABIN6745108

## anti-ANKRD13D antibody (AA 518-567)

### 1 Image

#### Overview

Quantity:	100 µL
Target:	ANKRD13D
Binding Specificity:	AA 518-567
Reactivity:	Human, Cow, Rabbit, Monkey
Host:	Rabbit
Clonality:	Polyclonal
Conjugate:	This ANKRD13D antibody is un-conjugated
Application:	Western Blotting (WB)

#### Product Details

Immunogen:	Synthetic peptide located between aa518-567 of human ANKRD13D (Q6ZTN6, NP_997237). Percent identity by BLAST analysis: Human, Chimpanzee, Gibbon, Monkey, Marmoset (100%), Gorilla (92%), Rabbit (85%), Panda (84%).  Type of Immunogen: Synthetic peptide
Specificity:	Human ANKRD13D
Predicted Reactivity:	Percent identity by BLAST analysis: Rabbit (85%).
Purification:	Immunoaffinity purified

#### Target Details

Target:	ANKRD13D
---------	----------

## Target Details

---

Alternative Name: [ANKRD13D \(ANKRD13D Products\)](#)

Background: Name/Gene ID: ANKRD13D

Synonyms: ANKRD13D

Gene ID: 338692

NCBI Accession: [NP\\_997237](#)

UniProt: [Q6ZTN6](#)

## Application Details

---

Application Notes: Approved: WB (0.2 - 1 µg/mL)

Usage: Western Blot: Suggested dilution at 1 µg/mL in 5 % skim milk / PBS buffer, and HRP conjugated anti-Rabbit IgG should be diluted in 1: 50,000 - 100,000 as secondary antibody.

Comment: Target Species of Antibody: Human

Restrictions: For Research Use only

## Handling

---

Format: Lyophilized

Reconstitution: Distilled water

Concentration: Lot specific

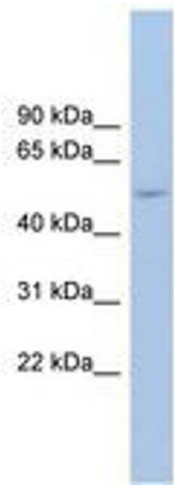
Buffer: Lyophilized from PBS with 2 % sucrose

Handling Advice: Avoid repeat freeze-thaw cycles.

Storage: 4 °C, -20 °C

Storage Comment: Long term: -20°C, the use of 50% glycerol is recommended if storing aliquots in -20°C for long term use (up to 1 year)

Short term (less than 1 week): 4°C. Avoid freeze-thaw cycles.



**Image 1.**