



[Go to Product page](#)

Datasheet for ABIN6745112  
**anti-FAM118A antibody (AA 215-264)**

1 Image

Overview

Quantity:	100 µL
Target:	FAM118A
Binding Specificity:	AA 215-264
Reactivity:	Human, Mouse, Cow, Rat, Dog, Guinea Pig, Horse, Monkey, Bat, Pig
Host:	Rabbit
Clonality:	Polyclonal
Conjugate:	This FAM118A antibody is un-conjugated
Application:	Western Blotting (WB)

Product Details

Immunogen:	Synthetic peptide located between aa215-264 of human FAM118A (Q9NWS6, NP_001098065). Percent identity by BLAST analysis: Human, Chimpanzee, Gorilla, Gibbon, Monkey, Galago, Marmoset, Mouse, Rat, Elephant, Dog, Bovine, Bat, Horse, Pig, Opossum, Guinea pig, Platypus, Lizard (100%).  Type of Immunogen: Synthetic peptide
Specificity:	Human FAM118A
Predicted Reactivity:	Percent identity by BLAST analysis: Rat, Dog, Bovine, Guinea pig (100%).
Purification:	Immunoaffinity purified

## Target Details

---

Target: FAM118A

Alternative Name: FAM118A ([FAM118A Products](#))

Background: Name/Gene ID: FAM118A

Synonyms: FAM118A, Protein FAM118A, BK268H5.C22.4, C22orf8

Gene ID: 55007

NCBI Accession: [NP\\_001098065](#)

UniProt: [Q9NWS6](#)

## Application Details

---

Application Notes: Approved: WB (0.2 - 1 µg/mL)

Usage: Western Blot: Suggested dilution at 1 µg/mL in 5 % skim milk / PBS buffer, and HRP conjugated anti-Rabbit IgG should be diluted in 1: 50,000 - 100,000 as secondary antibody.

Comment: Target Species of Antibody: Human

Restrictions: For Research Use only

## Handling

---

Format: Lyophilized

Reconstitution: Distilled water

Concentration: Lot specific

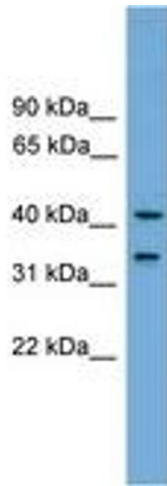
Buffer: Lyophilized from PBS with 2 % sucrose

Handling Advice: Avoid repeat freeze-thaw cycles.

Storage: 4 °C, -20 °C

Storage Comment: Long term: -20°C, the use of 50% glycerol is recommended if storing aliquots in -20°C for long term use (up to 1 year)

Short term (less than 1 week): 4°C. Avoid freeze-thaw cycles.



**Image 1.**