



[Go to Product page](#)

Datasheet for ABIN6745119  
**anti-RALB antibody (AA 107-156)**

1 Image

Overview

Quantity:	100 µL
Target:	RALB (Ralb)
Binding Specificity:	AA 107-156
Reactivity:	Human, Mouse, Rat, Monkey, Dog, Cow, Goat, Guinea Pig, Horse, Rabbit, Zebrafish (Danio rerio), Bat, Chicken, Xenopus laevis
Host:	Rabbit
Clonality:	Polyclonal
Conjugate:	This RALB antibody is un-conjugated
Application:	Western Blotting (WB)

Product Details

Immunogen:	Synthetic peptide located between aa107-156 of human RALB (P36860, NP_002872). Percent identity by BLAST analysis: Human, Chimpanzee, Gorilla, Orangutan, Gibbon, Monkey, Galago, Marmoset, Mouse, Rat, Elephant, Dog, Bovine, Bat, Rabbit, Horse, Opossum, Guinea pig, Turkey, Zebra finch, Chicken, Lizard, Xenopus, Trout, Zebrafish (100%), Goat, Salmon (85%).  Type of Immunogen: Synthetic peptide
Specificity:	Human RALB
Predicted Reactivity:	Percent identity by BLAST analysis: Human, Mouse, Rat, Dog, Bovine, Horse, Chicken, Xenopus, Zebrafish (100%) Goat (85%).
Purification:	Immunoaffinity purified

## Target Details

---

Target:	RALB (Ralb)
Alternative Name:	RALB ( <a href="#">Ralb Products</a> )
Background:	Name/Gene ID: RALB Family: Ras GTPase superfamily IPR001806  Synonyms: RALB, GTP binding protein), RAS-like protein B, Ras-related protein Ral-B
Gene ID:	5899
NCBI Accession:	<a href="#">NP_002872</a>
UniProt:	<a href="#">P11234</a>
Pathways:	<a href="#">Neurotrophin Signaling Pathway</a> , <a href="#">CXCR4-mediated Signaling Events</a>

## Application Details

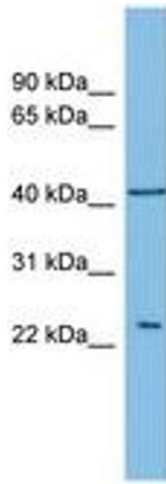
---

Application Notes:	Approved: WB (0.2 - 1 µg/mL)  Usage: Western Blot: Suggested dilution at 1 µg/mL in 5 % skim milk / PBS buffer, and HRP conjugated anti-Rabbit IgG should be diluted in 1: 50,000 - 100,000 as secondary antibody.
Comment:	Target Species of Antibody: Human
Restrictions:	For Research Use only

## Handling

---

Format:	Lyophilized
Reconstitution:	Distilled water
Concentration:	Lot specific
Buffer:	Lyophilized from PBS with 2 % sucrose
Handling Advice:	Avoid repeat freeze-thaw cycles.
Storage:	4 °C,-20 °C
Storage Comment:	Long term: -20°C, the use of 50% glycerol is recommended if storing aliquots in -20°C for long term use (up to 1 year)  Short term (less than 1 week): 4°C. Avoid freeze-thaw cycles.



**Image 1.**