



[Go to Product page](#)

Datasheet for ABIN6745130  
**anti-RAB39A antibody (N-Term)**

1 Image

Overview

Quantity:	100 µL
Target:	RAB39A
Binding Specificity:	N-Term
Reactivity:	Human, Mouse, Rat, Bat, Cow, Guinea Pig, Horse, Monkey, Pig, Rabbit
Host:	Rabbit
Clonality:	Polyclonal
Conjugate:	This RAB39A antibody is un-conjugated
Application:	Western Blotting (WB)

Product Details

Immunogen:	Synthetic peptide from N-Terminus of human RAB39A (Q8BHD0, NP_059986). Percent identity by BLAST analysis: Human, Gibbon, Monkey, Galago, Marmoset, Mouse, Rat, Elephant, Panda, Bovine, Bat, Rabbit, Horse, Pig, Guinea pig (100%), Dog, Opossum (92%).  Type of Immunogen: Synthetic peptide
Specificity:	Human RAB39
Predicted Reactivity:	Percent identity by BLAST analysis: Mouse, Rat, Bovine (100%) Dog (92%).
Purification:	Immunoaffinity purified

Target Details

Target:	RAB39A
---------	--------

## Target Details

---

Alternative Name: RAB39 / RAB39A ([RAB39A Products](#))

---

Background: Name/Gene ID: RAB39A  
Subfamily: RAS oncogene  
Family: Ras GTPase superfamily IPR001806

Synonyms: RAB39A, Rab-39, Ras-related protein Rab-39A, RAB39

---

Gene ID: 54734

---

NCBI Accession: [NP\\_059986](#)

---

UniProt: [Q14964](#)

---

## Application Details

---

Application Notes: Approved: WB (0.2 - 1 µg/mL)

Usage: Western Blot: Suggested dilution at 1 µg/mL in 5 % skim milk / PBS buffer, and HRP conjugated anti-Rabbit IgG should be diluted in 1: 50,000 - 100,000 as secondary antibody.

---

Comment: Target Species of Antibody: Human

---

Restrictions: For Research Use only

---

## Handling

---

Format: Lyophilized

---

Reconstitution: Distilled water

---

Concentration: Lot specific

---

Buffer: Lyophilized from PBS with 2 % sucrose

---

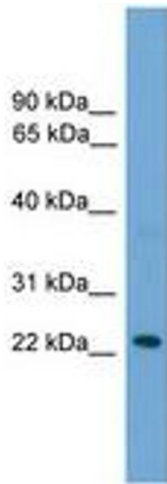
Handling Advice: Avoid repeat freeze-thaw cycles.

---

Storage: 4 °C, -20 °C

---

Storage Comment: Long term: -20°C, the use of 50% glycerol is recommended if storing aliquots in -20°C for long term use (up to 1 year)  
Short term (less than 1 week): 4°C. Avoid freeze-thaw cycles.



**Image 1.**