



[Go to Product page](#)

Datasheet for ABIN6745134  
**anti-PNRC2 antibody (AA 71-120)**

1 Image

Overview

Quantity:	100 µL
Target:	PNRC2
Binding Specificity:	AA 71-120
Reactivity:	Human, Rabbit, Guinea Pig, Zebrafish (Danio rerio), Monkey, Xenopus laevis
Host:	Rabbit
Clonality:	Polyclonal
Conjugate:	This PNRC2 antibody is un-conjugated
Application:	Western Blotting (WB)

Product Details

Immunogen:	Synthetic peptide located between aa71-120 of human PNRC2 (Q9NPJ4, NP_060231). Percent identity by BLAST analysis: Human, Gorilla, Gibbon, Monkey, Marmoset, Rabbit, Guinea pig, Xenopus, Zebrafish (100%), Mouse, Rat, Elephant, Panda, Bovine, Horse, Opossum, Zebra finch, Chicken (92%).  Type of Immunogen: Synthetic peptide
Specificity:	Human PNRC2
Predicted Reactivity:	Percent identity by BLAST analysis: Human, Zebrafish (100%) Mouse, Rat, Bovine, Chicken (92%).
Purification:	Immunoaffinity purified

## Target Details

---

Target:	PNRC2
Alternative Name:	PNRC2 ( <a href="#">PNRC2 Products</a> )
Background:	Name/Gene ID: PNRC2  Synonyms: PNRC2
Gene ID:	55629
NCBI Accession:	<a href="#">NP_060231</a>
UniProt:	<a href="#">Q9NPJ4</a>

## Application Details

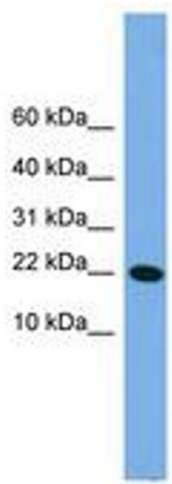
---

Application Notes:	Approved: WB (0.2 - 1 µg/mL)  Usage: Western Blot: Suggested dilution at 1 µg/mL in 5 % skim milk / PBS buffer, and HRP conjugated anti-Rabbit IgG should be diluted in 1: 50,000 - 100,000 as secondary antibody.
Comment:	Target Species of Antibody: Human
Restrictions:	For Research Use only

## Handling

---

Format:	Lyophilized
Reconstitution:	Distilled water
Concentration:	Lot specific
Buffer:	Lyophilized from PBS with 2 % sucrose
Handling Advice:	Avoid repeat freeze-thaw cycles.
Storage:	4 °C, -20 °C
Storage Comment:	Long term: -20°C, the use of 50% glycerol is recommended if storing aliquots in -20°C for long term use (up to 1 year)  Short term (less than 1 week): 4°C. Avoid freeze-thaw cycles.



**Image 1.**