



[Go to Product page](#)

Datasheet for ABIN6745138

anti-PNMA-Like 1 antibody (AA 359-408)

1 Image

Overview

Quantity:	100 µL
Target:	PNMA-Like 1 (PNMAL1)
Binding Specificity:	AA 359-408
Reactivity:	Human
Host:	Rabbit
Clonality:	Polyclonal
Conjugate:	This PNMA-Like 1 antibody is un-conjugated
Application:	Western Blotting (WB)

Product Details

Immunogen:	Synthetic peptide located between aa359-408 of human PNMAL1 (Q86V59, NP_060685). Percent identity by BLAST analysis: Human (100%), Gorilla, Orangutan, Gibbon, Monkey (92%), Galago (85%). Type of Immunogen: Synthetic peptide
Specificity:	Human PNMAL1
Predicted Reactivity:	Percent identity by BLAST analysis:
Purification:	Immunoaffinity purified

Target Details

Target:	PNMA-Like 1 (PNMAL1)
---------	----------------------

Target Details

Alternative Name:	PNMAL1 (PNMAL1 Products)
Background:	Name/Gene ID: PNMAL1 Synonyms: PNMAL1, PNMA-like 1, KIAA1183L, PNMA-like protein 1
Gene ID:	55228
NCBI Accession:	NP_060685
UniProt:	Q86V59

Application Details

Application Notes:	Approved: WB (0.2 - 1 µg/mL) Usage: Western Blot: Suggested dilution at 1 µg/mL in 5 % skim milk / PBS buffer, and HRP conjugated anti-Rabbit IgG should be diluted in 1: 50,000 - 100,000 as secondary antibody.
Comment:	Target Species of Antibody: Human
Restrictions:	For Research Use only

Handling

Format:	Lyophilized
Reconstitution:	Distilled water
Concentration:	Lot specific
Buffer:	Lyophilized from PBS with 2 % sucrose
Handling Advice:	Avoid repeat freeze-thaw cycles.
Storage:	4 °C,-20 °C
Storage Comment:	Long term: -20°C, the use of 50% glycerol is recommended if storing aliquots in -20°C for long term use (up to 1 year) Short term (less than 1 week): 4°C. Avoid freeze-thaw cycles.

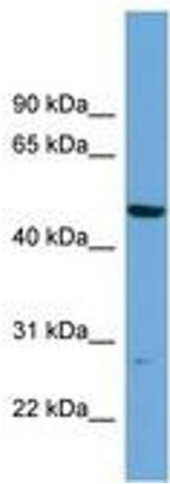


Image 1.