



[Go to Product page](#)

Datasheet for ABIN6745139
anti-RIOK2 antibody (AA 179-228)

1 Image

Overview

Quantity:	100 µL
Target:	RIOK2
Binding Specificity:	AA 179-228
Reactivity:	Human, Mouse, Rabbit, Cow, Dog, Rat, Guinea Pig, Horse, Monkey, Bat
Host:	Rabbit
Clonality:	Polyclonal
Conjugate:	This RIOK2 antibody is un-conjugated
Application:	Western Blotting (WB)

Product Details

Immunogen:	Synthetic peptide located between aa179-228 of human RIOK2 (Q9BVS4, NP_060813). Percent identity by BLAST analysis: Human, Chimpanzee, Gorilla, Gibbon, Monkey, Galago, Marmoset, Mouse, Rat, Panda, Dog, Bovine, Bat, Rabbit, Horse, Guinea pig (100%), Elephant, Pig (92%). Type of Immunogen: Synthetic peptide
Specificity:	Human RIOK2
Predicted Reactivity:	Percent identity by BLAST analysis: Human, Mouse, Rat, Dog, Bovine, Horse, Guinea pig (100%) Pig (92%).
Purification:	Immunoaffinity purified

Target Details

Target:	RIOK2
Alternative Name:	RIOK2 (RIOK2 Products)
Background:	Name/Gene ID: RIOK2 Subfamily: RIO Family: Protein Kinase Synonyms: RIOK2, RIO kinase 2, RIO kinase 2 (yeast), RIO2
Gene ID:	55781
NCBI Accession:	NP_060813
UniProt:	Q9BVS4

Application Details

Application Notes:	Approved: WB (0.2 - 1 µg/mL) Usage: Western Blot: Suggested dilution at 1 µg/mL in 5 % skim milk / PBS buffer, and HRP conjugated anti-Rabbit IgG should be diluted in 1: 50,000 - 100,000 as secondary antibody.
Comment:	Target Species of Antibody: Human
Restrictions:	For Research Use only

Handling

Format:	Lyophilized
Reconstitution:	Distilled water
Concentration:	Lot specific
Buffer:	Lyophilized from PBS with 2 % sucrose
Handling Advice:	Avoid repeat freeze-thaw cycles.
Storage:	4 °C,-20 °C
Storage Comment:	Long term: -20°C, the use of 50% glycerol is recommended if storing aliquots in -20°C for long term use (up to 1 year) Short term (less than 1 week): 4°C. Avoid freeze-thaw cycles.

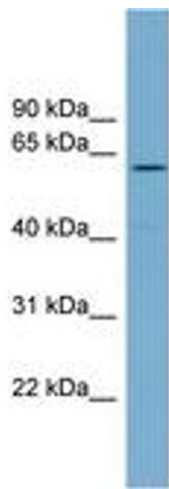


Image 1.