

Datasheet for ABIN674514
anti-ING1 antibody (AA 301-422)[Go to Product page](#)

1 Image

Overview

Quantity:	100 µL
Target:	ING1
Binding Specificity:	AA 301-422
Reactivity:	Human, Mouse
Host:	Rabbit
Clonality:	Polyclonal
Conjugate:	This ING1 antibody is un-conjugated
Application:	Western Blotting (WB), ELISA, Immunofluorescence (Cultured Cells) (IF (cc)), Immunofluorescence (Paraffin-embedded Sections) (IF (p)), Immunohistochemistry (Paraffin- embedded Sections) (IHC (p)), Immunohistochemistry (Frozen Sections) (IHC (fro))

Product Details

Immunogen:	KLH conjugated synthetic peptide derived from human inhibitor of growth gene 1
Isotype:	IgG
Cross-Reactivity:	Human, Mouse
Predicted Reactivity:	Rat
Purification:	Purified by Protein A.

Target Details

Target:	ING1
---------	------

Target Details

Alternative Name:	ING1/p33ING1b (ING1 Products)
Background:	<p>Synonyms: inhibitor of growth gene 1, Growth inhibitor ING 1, Growth inhibitor ING1, Growth inhibitory protein ING 1, Growth inhibitory protein ING1, Homo sapiens growth inhibitor p33ING1 ING1 mRNA, complete cds, ING 1, Inhibitor of growth 1, Inhibitor of growth family member 1, Inhibitor of growth protein 1, p24ING1c, p33, p33 ING1, p33ING1, p33ING1b, p47, p47ING1a, Tumor suppressor ING 1, Tumor suppressor ING1.</p> <p>Background: This gene encodes a tumor suppressor protein that can induce cell growth arrest and apoptosis. The encoded protein is a nuclear protein that physically interacts with the tumor suppressor protein TP53 and is a component of the p53 signaling pathway. Reduced expression and rearrangement of this gene have been detected in various cancers. Multiple alternatively spliced transcript variants encoding distinct isoforms have been reported. [provided by RefSeq].</p>
Gene ID:	3621
Pathways:	Protein targeting to Nucleus , Autophagy

Application Details

Application Notes:	WB 1:300-5000 ELISA 1:500-1000 IHC-P 1:200-400 IHC-F 1:100-500 IF(IHC-P) 1:50-200 IF(IHC-F) 1:50-200 IF(ICC) 1:50-200
Restrictions:	For Research Use only

Handling

Format:	Liquid
Concentration:	1 µg/µL
Buffer:	0.01M TBS(pH 7.4) with 1 % BSA, 0.02 % Proclin300 and 50 % Glycerol.
Preservative:	ProClin
Precaution of Use:	This product contains ProClin: a POISONOUS AND HAZARDOUS SUBSTANCE, which should be handled by trained staff only.

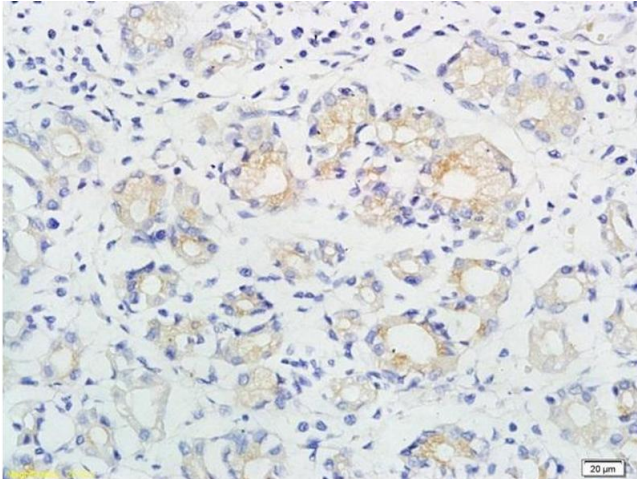
Handling

Storage: 4 °C, -20 °C

Storage Comment: Shipped at 4°C. Store at -20°C for one year. Avoid repeated freeze/thaw cycles.

Expiry Date: 12 months

Images



Immunohistochemistry

Image 1. Formalin-fixed and paraffin embedded human gastric cancer labeled with Anti-ING1/p33 Polyclonal Antibody, Unconjugated (ABIN674514) followed by conjugation to the secondary antibody and DAB staining