



[Go to Product page](#)

Datasheet for ABIN6745140
anti-RSBN1 antibody (AA 35-84)

1 Image

Overview

Quantity:	100 µL
Target:	RSBN1
Binding Specificity:	AA 35-84
Reactivity:	Human, Cow, Dog, Guinea Pig, Mouse, Rabbit, Rat, Bat, Monkey, Pig
Host:	Rabbit
Clonality:	Polyclonal
Conjugate:	This RSBN1 antibody is un-conjugated
Application:	Western Blotting (WB)

Product Details

Immunogen:	Synthetic peptide located between aa35-84 of human RSBN1 (Q5VWQ0, NP_060834). Percent identity by BLAST analysis: Human, Chimpanzee, Gorilla, Gibbon, Galago, Marmoset, Mouse, Rat, Dog, Bat, Rabbit, Pig, Guinea pig (100%), Elephant (92%), Bovine (85%). Type of Immunogen: Synthetic peptide
Specificity:	Human RSBN1
Predicted Reactivity:	Percent identity by BLAST analysis: Human, Mouse, Rat, Dog, Pig (100%) Bovine (85%).
Purification:	Immunoaffinity purified

Target Details

Target:	RSBN1
---------	-------

Target Details

Alternative Name:	RSBN1 (RSBN1 Products)
Background:	Name/Gene ID: RSBN1 Synonyms: RSBN1, ROSBIN, RP11-324J2.1
Gene ID:	54665
NCBI Accession:	NP_060834
UniProt:	Q5VWQ0

Application Details

Application Notes:	Approved: WB (0.2 - 1 µg/mL) Usage: Western Blot: Suggested dilution at 1 µg/mL in 5 % skim milk / PBS buffer, and HRP conjugated anti-Rabbit IgG should be diluted in 1: 50,000 - 100,000 as secondary antibody.
Comment:	Target Species of Antibody: Human
Restrictions:	For Research Use only

Handling

Format:	Lyophilized
Reconstitution:	Distilled water
Concentration:	Lot specific
Buffer:	Lyophilized from PBS with 2 % sucrose
Handling Advice:	Avoid repeat freeze-thaw cycles.
Storage:	4 °C,-20 °C
Storage Comment:	Long term: -20°C, the use of 50% glycerol is recommended if storing aliquots in -20°C for long term use (up to 1 year) Short term (less than 1 week): 4°C. Avoid freeze-thaw cycles.

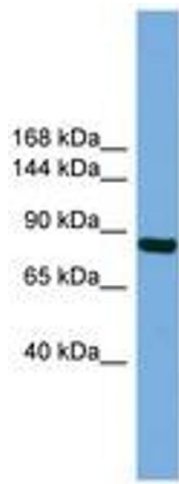


Image 1.