



[Go to Product page](#)

Datasheet for ABIN6745152
anti-CALCOCO1 antibody (AA 71-120)

1 Image

Overview

Quantity:	100 µL
Target:	CALCOCO1
Binding Specificity:	AA 71-120
Reactivity:	Human, Mouse, Rat, Dog, Guinea Pig, Horse, Rabbit, Cow, Bat, Monkey
Host:	Rabbit
Clonality:	Polyclonal
Conjugate:	This CALCOCO1 antibody is un-conjugated
Application:	Western Blotting (WB)

Product Details

Immunogen:	Synthetic peptide located between aa71-120 of human CALCOCO1 (Q9P1Z2, NP_065949). Percent identity by BLAST analysis: Human, Gorilla, Orangutan, Gibbon, Galago, Marmoset, Mouse, Rat, Elephant, Panda, Dog, Bovine, Bat, Rabbit, Horse, Guinea pig (100%). Type of Immunogen: Synthetic peptide
Specificity:	Human CALCOCO1 / CoCoa
Predicted Reactivity:	Percent identity by BLAST analysis: Human, Mouse, Dog, Rabbit, Horse (100%).
Purification:	Immunoaffinity purified

Target Details

Target:	CALCOCO1
---------	----------

Target Details

Alternative Name:	CALCOC01 / CoCoa (CALCOC01 Products)
Background:	Name/Gene ID: CALCOC01 Synonyms: CALCOC01, Calphoglin, PP13275, Sarcoma antigen NY-SAR-3, Cocoa, KIAA1536
Gene ID:	57658
NCBI Accession:	NP_065949
UniProt:	Q9P1Z2
Pathways:	Intracellular Steroid Hormone Receptor Signaling Pathway , Chromatin Binding

Application Details

Application Notes:	Approved: WB (0.2 - 1 µg/mL) Usage: Western Blot: Suggested dilution at 1 µg/mL in 5 % skim milk / PBS buffer, and HRP conjugated anti-Rabbit IgG should be diluted in 1: 50,000 - 100,000 as secondary antibody.
Comment:	Target Species of Antibody: Human
Restrictions:	For Research Use only

Handling

Format:	Lyophilized
Reconstitution:	Distilled water
Concentration:	Lot specific
Buffer:	Lyophilized from PBS with 2 % sucrose
Handling Advice:	Avoid repeat freeze-thaw cycles.
Storage:	4 °C, -20 °C
Storage Comment:	Long term: -20°C, the use of 50% glycerol is recommended if storing aliquots in -20°C for long term use (up to 1 year) Short term (less than 1 week): 4°C. Avoid freeze-thaw cycles.

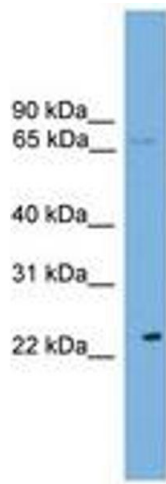


Image 1.