



Datasheet for ABIN6745160
anti-SEN2 antibody (AA 503-552)



[Go to Product page](#)

1 Image

Overview

Quantity:	100 µL
Target:	SEN2
Binding Specificity:	AA 503-552
Reactivity:	Human, Mouse, Rat, Monkey, Dog, Cow, Guinea Pig, Horse, Rabbit, Pig
Host:	Rabbit
Clonality:	Polyclonal
Conjugate:	This SEN2 antibody is un-conjugated
Application:	Western Blotting (WB)

Product Details

Immunogen:	Synthetic peptide located between aa503-552 of human SEN2 (Q9HC62, NP_067640). Percent identity by BLAST analysis: Human, Orangutan, Gibbon, Galago, Marmoset, Mouse, Rat, Elephant, Dog, Bovine, Rabbit, Horse, Pig, Guinea pig (100%), Lizard (92%). Type of Immunogen: Synthetic peptide
Specificity:	Human SEN2
Predicted Reactivity:	Percent identity by BLAST analysis: Human, Mouse, Rat, Dog, Bovine, Rabbit, Horse, Pig (100%).
Purification:	Immunoaffinity purified

Target Details

Target:	SEN2
---------	------

Target Details

Alternative Name:	SENP2 (SENP2 Products)
Background:	Name/Gene ID: SENP2 Subfamily: Cysteine C48 Family: Protease Synonyms: SENP2, SMT3-specific isopeptidase 2, SMT3IP2, AXAM2, KIAA1331, Sentrin-specific protease 2
Gene ID:	59343
NCBI Accession:	NP_067640
UniProt:	Q9HC62
Pathways:	Chromatin Binding

Application Details

Application Notes:	Approved: WB (0.2 - 1 µg/mL) Usage: Western Blot: Suggested dilution at 1 µg/mL in 5 % skim milk / PBS buffer, and HRP conjugated anti-Rabbit IgG should be diluted in 1: 50,000 - 100,000 as secondary antibody.
Comment:	Target Species of Antibody: Human
Restrictions:	For Research Use only

Handling

Format:	Lyophilized
Reconstitution:	Distilled water
Concentration:	Lot specific
Buffer:	Lyophilized from PBS with 2 % sucrose
Handling Advice:	Avoid repeat freeze-thaw cycles.
Storage:	4 °C, -20 °C
Storage Comment:	Long term: -20°C, the use of 50% glycerol is recommended if storing aliquots in -20°C for long term use (up to 1 year) Short term (less than 1 week): 4°C. Avoid freeze-thaw cycles.

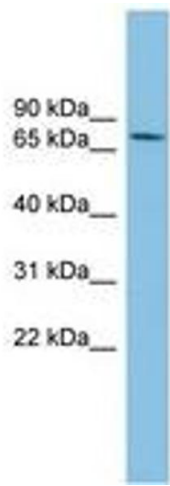


Image 1.