



[Go to Product page](#)

Datasheet for ABIN6745172

## anti-ANKRD5 antibody (AA 611-660)

### 1 Image

#### Overview

Quantity:	100 µL
Target:	ANKRD5
Binding Specificity:	AA 611-660
Reactivity:	Human, Rat, Cow, Dog, Horse, Rabbit, Monkey
Host:	Rabbit
Clonality:	Polyclonal
Conjugate:	This ANKRD5 antibody is un-conjugated
Application:	Western Blotting (WB)

#### Product Details

Immunogen:	Synthetic peptide located between aa611-660 of human ANKEF1 (Q9NU02, NP_071379). Percent identity by BLAST analysis: Human, Gorilla, Orangutan, Gibbon, Monkey, Galago, Elephant, Dog, Bovine, Rabbit (100%), Panda, Pig (92%), Mouse, Bat (85%), Rat (78%).  Type of Immunogen: Synthetic peptide
Specificity:	Human ANKRD5
Predicted Reactivity:	Percent identity by BLAST analysis: Human, Dog, Bovine, Rabbit (100%) Pig (92%).
Purification:	Immunoaffinity purified

#### Target Details

Target:	ANKRD5
---------	--------

## Target Details

---

Alternative Name:	<a href="#">ANKEF1 (ANKRD5 Products)</a>
Background:	Name/Gene ID: ANKEF1  Synonyms: ANKEF1, ANKRD5, DJ839B4.6
Gene ID:	63926
NCBI Accession:	<a href="#">NP_071379</a>
UniProt:	<a href="#">Q9NU02</a>

## Application Details

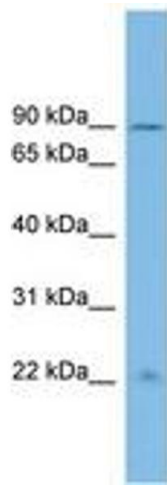
---

Application Notes:	Approved: WB (0.2 - 1 µg/mL)  Usage: Western Blot: Suggested dilution at 1 µg/mL in 5 % skim milk / PBS buffer, and HRP conjugated anti-Rabbit IgG should be diluted in 1: 50,000 - 100,000 as secondary antibody.
Comment:	Target Species of Antibody: Human
Restrictions:	For Research Use only

## Handling

---

Format:	Lyophilized
Reconstitution:	Distilled water
Concentration:	Lot specific
Buffer:	Lyophilized from PBS with 2 % sucrose
Handling Advice:	Avoid repeat freeze-thaw cycles.
Storage:	4 °C,-20 °C
Storage Comment:	Long term: -20°C, the use of 50% glycerol is recommended if storing aliquots in -20°C for long term use (up to 1 year)  Short term (less than 1 week): 4°C. Avoid freeze-thaw cycles.



**Image 1.**