

Datasheet for ABIN6745180
anti-DUS1L antibody (AA 359-408)



[Go to Product page](#)

1 Image

Overview

Quantity:	100 µL
Target:	DUS1L
Binding Specificity:	AA 359-408
Reactivity:	Human, Mouse, Rat, Guinea Pig, Horse, Dog, Monkey, Bat
Host:	Rabbit
Clonality:	Polyclonal
Conjugate:	This DUS1L antibody is un-conjugated
Application:	Western Blotting (WB)

Product Details

Immunogen:	Synthetic peptide located between aa359-408 of human DUS1L (Q6P1R4, NP_071439). Percent identity by BLAST analysis: Human, Gorilla, Gibbon, Monkey, Galago, Marmoset, Mouse, Rat, Dog, Bat, Horse, Guinea pig (100%), Elephant, Panda (92%). Type of Immunogen: Synthetic peptide
Specificity:	Human DUS1L
Predicted Reactivity:	Percent identity by BLAST analysis: Human, Mouse, Rat, Dog, Horse, Guinea pig (100%).
Purification:	Immunoaffinity purified

Target Details

Target:	DUS1L
---------	-------

Target Details

Alternative Name:	DUS1L (DUS1L Products)
Background:	Name/Gene ID: DUS1L Synonyms: DUS1L, DUS1, PP3111
Gene ID:	64118
NCBI Accession:	NP_071439
UniProt:	Q6P1R4

Application Details

Application Notes:	Approved: WB (0.2 - 1 µg/mL) Usage: Western Blot: Suggested dilution at 1 µg/mL in 5 % skim milk / PBS buffer, and HRP conjugated anti-Rabbit IgG should be diluted in 1: 50,000 - 100,000 as secondary antibody.
Comment:	Target Species of Antibody: Human
Restrictions:	For Research Use only

Handling

Format:	Lyophilized
Reconstitution:	Distilled water
Concentration:	Lot specific
Buffer:	Lyophilized from PBS with 2 % sucrose
Handling Advice:	Avoid repeat freeze-thaw cycles.
Storage:	4 °C,-20 °C
Storage Comment:	Long term: -20°C, the use of 50% glycerol is recommended if storing aliquots in -20°C for long term use (up to 1 year) Short term (less than 1 week): 4°C. Avoid freeze-thaw cycles.

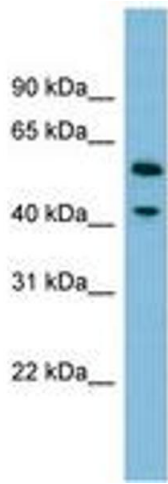


Image 1.