

Datasheet for ABIN6745187
anti-HS1BP3 antibody (AA 71-120)[Go to Product page](#)

1 Image

Overview

Quantity:	100 µL
Target:	HS1BP3
Binding Specificity:	AA 71-120
Reactivity:	Human, Mouse, Rat, Guinea Pig, Chicken, Hamster, Monkey
Host:	Rabbit
Clonality:	Polyclonal
Conjugate:	This HS1BP3 antibody is un-conjugated
Application:	Western Blotting (WB)

Product Details

Immunogen:	Synthetic peptide located between aa71-120 of human HS1BP3 (Q53T59, NP_071905). Percent identity by BLAST analysis: Human, Chimpanzee, Monkey, Galago, Marmoset, Mouse, Rat, Hamster, Opossum, Guinea pig, Turkey, Chicken, Lizard (100%), Gibbon, Elephant, Dog, Bovine, Rabbit, Horse, Zebra finch, Xenopus (92%), Platypus (85%). Type of Immunogen: Synthetic peptide
Specificity:	Human HS1BP3
Predicted Reactivity:	Percent identity by BLAST analysis: Human, Rat, Guinea pig, Chicken (100%) Dog, Bovine, Rabbit, Horse (92%).
Purification:	Immunoaffinity purified

Target Details

Target:	HS1BP3
Alternative Name:	HS1BP3 (HS1BP3 Products)
Background:	Name/Gene ID: HS1BP3 Synonyms: HS1BP3, HCLS1-binding protein 3, HCLS1 binding protein 3, HS1-BP3, HSP1BP-3, HS1-binding protein 3, ETM2
Gene ID:	64342
NCBI Accession:	NP_071905
UniProt:	Q53T59

Application Details

Application Notes:	Approved: WB (0.2 - 1 µg/mL) Usage: Western Blot: Suggested dilution at 1 µg/mL in 5 % skim milk / PBS buffer, and HRP conjugated anti-Rabbit IgG should be diluted in 1: 50,000 - 100,000 as secondary antibody.
Comment:	Target Species of Antibody: Human
Restrictions:	For Research Use only

Handling

Format:	Lyophilized
Reconstitution:	Distilled water
Concentration:	Lot specific
Buffer:	Lyophilized from PBS with 2 % sucrose
Handling Advice:	Avoid repeat freeze-thaw cycles.
Storage:	4 °C, -20 °C
Storage Comment:	Long term: -20°C, the use of 50% glycerol is recommended if storing aliquots in -20°C for long term use (up to 1 year) Short term (less than 1 week): 4°C. Avoid freeze-thaw cycles.

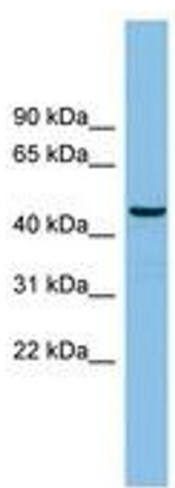


Image 1.