

Datasheet for ABIN6745195
anti-MTRR antibody (AA 71-120)[Go to Product page](#)

1 Image

Overview

Quantity:	100 µL
Target:	MTRR
Binding Specificity:	AA 71-120
Reactivity:	Human, Dog, Mouse, Rabbit, Rat, Bat, Chicken, Monkey
Host:	Rabbit
Clonality:	Polyclonal
Conjugate:	This MTRR antibody is un-conjugated
Application:	Western Blotting (WB)

Product Details

Immunogen:	Synthetic peptide located between aa71-120 of human MTRR (Q9UBK8, NP_076915). Percent identity by BLAST analysis: Human, Chimpanzee, Gorilla, Orangutan, Gibbon, Monkey, Galago, Marmoset, Mouse, Rat, Elephant, Dog, Bat, Rabbit, Turkey, Zebra finch, Chicken (100%), Bovine, Horse, Pig, Guinea pig (92%), Opossum, Platypus (91%), Lizard (85%). Type of Immunogen: Synthetic peptide
Specificity:	Human MTRR
Predicted Reactivity:	Percent identity by BLAST analysis: Human, Mouse, Rat, Dog, Rabbit, Chicken (100%) Bovine, Horse, Pig, Guinea pig (92%).
Purification:	Immunoaffinity purified

Target Details

Target:	MTRR
Alternative Name:	MTRR (MTRR Products)
Background:	Name/Gene ID: MTRR Synonyms: MTRR, CblE, MSR, Methionine synthase reductase
Gene ID:	4552
NCBI Accession:	NP_076915
Pathways:	Methionine Biosynthetic Process

Application Details

Application Notes:	Approved: WB (0.2 - 1 µg/mL) Usage: Western Blot: Suggested dilution at 1 µg/mL in 5 % skim milk / PBS buffer, and HRP conjugated anti-Rabbit IgG should be diluted in 1: 50,000 - 100,000 as secondary antibody.
Comment:	Target Species of Antibody: Human
Restrictions:	For Research Use only

Handling

Format:	Lyophilized
Reconstitution:	Distilled water
Concentration:	Lot specific
Buffer:	Lyophilized from PBS with 2 % sucrose
Handling Advice:	Avoid repeat freeze-thaw cycles.
Storage:	4 °C, -20 °C
Storage Comment:	Long term: -20°C, the use of 50% glycerol is recommended if storing aliquots in -20°C for long term use (up to 1 year) Short term (less than 1 week): 4°C. Avoid freeze-thaw cycles.

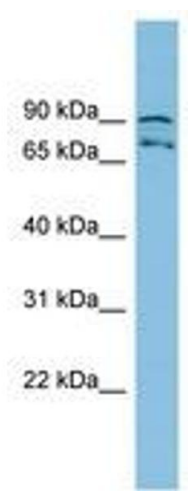


Image 1.