



[Go to Product page](#)

Datasheet for ABIN6745197  
**anti-USP36 antibody (AA 71-120)**

1 Image

Overview

Quantity:	100 µL
Target:	USP36
Binding Specificity:	AA 71-120
Reactivity:	Human, Dog, Monkey
Host:	Rabbit
Clonality:	Polyclonal
Conjugate:	This USP36 antibody is un-conjugated
Application:	Western Blotting (WB)

Product Details

Immunogen:	Synthetic peptide located between aa71-120 of human USP36 (Q9P275-2, NP_079366). Percent identity by BLAST analysis: Human, Chimpanzee, Gorilla, Monkey, Marmoset (100%), Gibbon, Bovine (92%), Dog (84%), Bat (83%).  Type of Immunogen: Synthetic peptide
Specificity:	Human USP36
Predicted Reactivity:	Percent identity by BLAST analysis: Human (100%) Bovine (92%) Dog (84%).
Purification:	Immunoaffinity purified

Target Details

Target:	USP36
---------	-------

## Target Details

---

Alternative Name:	USP36 ( <a href="#">USP36 Products</a> )
Background:	Name/Gene ID: USP36 Subfamily: Cysteine C19 Family: Protease  Synonyms: USP36, DUB1, Deubiquitinating enzyme 1, KIAA1453, Ubiquitin thioesterase 36, Ubiquitin specific protease 36, Deubiquitinating enzyme 36, Ubiquitin thiolesterase 36
Gene ID:	57602
NCBI Accession:	<a href="#">NP_079366</a>
UniProt:	<a href="#">Q9P275</a>

## Application Details

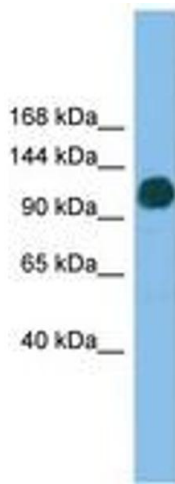
---

Application Notes:	Approved: WB (0.2 - 1 µg/mL)  Usage: Western Blot: Suggested dilution at 1 µg/mL in 5 % skim milk / PBS buffer, and HRP conjugated anti-Rabbit IgG should be diluted in 1: 50,000 - 100,000 as secondary antibody.
Comment:	Target Species of Antibody: Human
Restrictions:	For Research Use only

## Handling

---

Format:	Lyophilized
Reconstitution:	Distilled water
Concentration:	Lot specific
Buffer:	Lyophilized from PBS with 2 % sucrose
Handling Advice:	Avoid repeat freeze-thaw cycles.
Storage:	4 °C, -20 °C
Storage Comment:	Long term: -20°C, the use of 50% glycerol is recommended if storing aliquots in -20°C for long term use (up to 1 year)  Short term (less than 1 week): 4°C. Avoid freeze-thaw cycles.



**Image 1.**