

## Datasheet for ABIN6745202 anti-SMEK1 antibody (AA 611-660)



[Go to Product page](#)

### 1 Image

#### Overview

Quantity:	100 µL
Target:	SMEK1
Binding Specificity:	AA 611-660
Reactivity:	Mouse, Human, Rat, Zebrafish (Danio rerio), Cow, Horse, Chicken, Rabbit, Guinea Pig, Monkey, Bat, Pig
Host:	Rabbit
Clonality:	Polyclonal
Conjugate:	This SMEK1 antibody is un-conjugated
Application:	Western Blotting (WB)

#### Product Details

Immunogen:	Synthetic peptide located between aa611-660 of human SMEK1 (Q6IN85-2). Percent identity by BLAST analysis: Human, Chimpanzee, Gorilla, Gibbon, Monkey, Galago, Marmoset, Mouse, Rat, Elephant, Panda, Bovine, Bat, Rabbit, Horse, Pig, Opossum, Guinea pig, Turkey, Chicken, Platypus, Lizard, Stickleback, Pufferfish, Zebrafish (100%), Xenopus (92%).  Type of Immunogen: Synthetic peptide
Specificity:	Human SMEK1
Predicted Reactivity:	Percent identity by BLAST analysis: Human, Mouse, Bovine, Rabbit, Horse, Pig, Guinea pig, Chicken, Zebrafish (100%).
Purification:	Immunoaffinity purified

## Target Details

Target:	SMEK1
Alternative Name:	SMEK1 ( <a href="#">SMEK1 Products</a> )
Background:	Name/Gene ID: SMEK1  Synonyms: SMEK1, FLFL1, KIAA2010, MSTP033, SMEK homolog 1, Smk1, PP4R3A, PPP4R3A, Smk-1
Gene ID:	55671
Pathways:	<a href="#">Regulation of Carbohydrate Metabolic Process</a>

## Application Details

Application Notes:	Approved: WB (0.2 - 1 µg/mL)  Usage: Western Blot: Suggested dilution at 1 µg/mL in 5 % skim milk / PBS buffer, and HRP conjugated anti-Rabbit IgG should be diluted in 1: 50,000 - 100,000 as secondary antibody.
Comment:	Target Species of Antibody: Human
Restrictions:	For Research Use only

## Handling

Format:	Lyophilized
Reconstitution:	Distilled water
Concentration:	Lot specific
Buffer:	Lyophilized from PBS with 2 % sucrose
Handling Advice:	Avoid repeat freeze-thaw cycles.
Storage:	4 °C, -20 °C
Storage Comment:	Long term: -20°C, the use of 50% glycerol is recommended if storing aliquots in -20°C for long term use (up to 1 year)  Short term (less than 1 week): 4°C. Avoid freeze-thaw cycles.

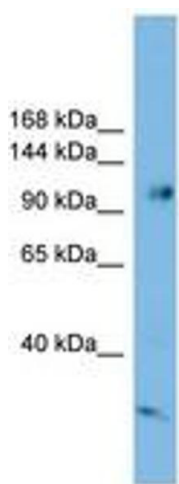


Image 1.