



[Go to Product page](#)

Datasheet for ABIN6745232

anti-Retinoblastoma Protein (Rb) antibody (N-Term)

1 Image

Overview

Quantity:	100 µL
Target:	Retinoblastoma Protein (Rb) (Rb Protein)
Binding Specificity:	N-Term
Reactivity:	Human, Mouse, Monkey
Host:	Rabbit
Clonality:	Polyclonal
Conjugate:	This Retinoblastoma Protein (Rb) antibody is un-conjugated
Application:	Western Blotting (WB)

Product Details

Immunogen:	Synthetic peptide from N-Terminus of human RB1 (P06400, NP_000312). Percent identity by BLAST analysis: Human, Chimpanzee, Gorilla, Gibbon, Monkey (100%), Pig (93%), Galago, Bovine, Rabbit, Drosophila (92%), Panda (85%), Marmoset (82%), Mouse (80%), Rat (78%). Type of Immunogen: Synthetic peptide
Specificity:	Human RB1
Predicted Reactivity:	Percent identity by BLAST analysis: Human (100%) Pig (93%) Bovine, Rabbit (92%) Mouse (80%).
Purification:	Immunoaffinity purified

Target Details

Target:	Retinoblastoma Protein (Rb) (Rb Protein)
Alternative Name:	RB1 / Retinoblastoma / RB (Rb Protein Products)
Background:	Name/Gene ID: RB1 Synonyms: RB1, p105-Rb, Osteosarcoma, PRb, Retinoblastoma, Retinoblastoma 1, OSRC, RB, Pp110
Gene ID:	5925
NCBI Accession:	NP_000312
UniProt:	P06400
Pathways:	Mitotic G1-G1/S Phases

Application Details

Application Notes:	Approved: WB (0.2 - 1 µg/mL) Usage: Western Blot: Suggested dilution at 1 µg/mL in 5 % skim milk / PBS buffer, and HRP conjugated anti-Rabbit IgG should be diluted in 1: 50,000 - 100,000 as secondary antibody.
Comment:	Target Species of Antibody: Human
Restrictions:	For Research Use only

Handling

Format:	Lyophilized
Reconstitution:	Distilled water
Concentration:	Lot specific
Buffer:	Lyophilized from PBS with 2 % sucrose
Handling Advice:	Avoid repeat freeze-thaw cycles.
Storage:	4 °C,-20 °C
Storage Comment:	Long term: -20°C, the use of 50% glycerol is recommended if storing aliquots in -20°C for long term use (up to 1 year) Short term (less than 1 week): 4°C. Avoid freeze-thaw cycles.

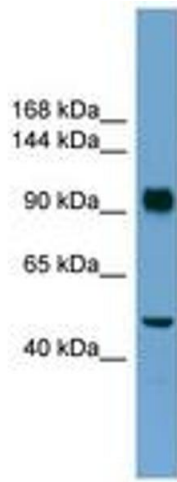


Image 1.