



[Go to Product page](#)

Datasheet for ABIN6745235
anti-TFEB antibody (AA 395-444)

1 Image

Overview

Quantity:	100 µL
Target:	TFEB
Binding Specificity:	AA 395-444
Reactivity:	Human, Dog, Cow, Horse, Goat, Rabbit, Monkey
Host:	Rabbit
Clonality:	Polyclonal
Conjugate:	This TFEB antibody is un-conjugated
Application:	Western Blotting (WB)

Product Details

Immunogen:	Synthetic peptide located between aa395-444 of human TFEB (P19484, NP_009093). Percent identity by BLAST analysis: Human, Chimpanzee, Gorilla, Gibbon, Baboon, Monkey, Marmoset (100%), Shrew, Dog, Bat, Rabbit (85%), Galago, Horse (84%). Type of Immunogen: Synthetic peptide
Specificity:	Human TFEB
Predicted Reactivity:	Percent identity by BLAST analysis: Human (100%) Dog, Rabbit (85%) Horse (84%).
Purification:	Immunoaffinity purified

Target Details

Target:	TFEB
---------	------

Target Details

Alternative Name:	TFEB (TFEB Products)
Background:	Name/Gene ID: TFEB Family: Transcription factor Synonyms: TFEB, ALPHATFEB, BHLHE35, T-cell transcription factor EB, TCFEB, Transcription factor EB
Gene ID:	7942
NCBI Accession:	NP_009093
UniProt:	P19484

Application Details

Application Notes:	Approved: WB (0.2 - 1 µg/mL) Usage: Western Blot: Suggested dilution at 1 µg/mL in 5 % skim milk / PBS buffer, and HRP conjugated anti-Rabbit IgG should be diluted in 1: 50,000 - 100,000 as secondary antibody.
Comment:	Target Species of Antibody: Human
Restrictions:	For Research Use only

Handling

Format:	Lyophilized
Reconstitution:	Distilled water
Concentration:	Lot specific
Buffer:	Lyophilized from PBS with 2 % sucrose
Handling Advice:	Avoid repeat freeze-thaw cycles.
Storage:	4 °C, -20 °C
Storage Comment:	Long term: -20°C, the use of 50% glycerol is recommended if storing aliquots in -20°C for long term use (up to 1 year) Short term (less than 1 week): 4°C. Avoid freeze-thaw cycles.

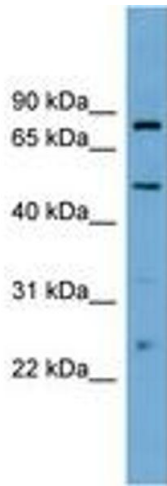


Image 1.