



[Go to Product page](#)

Datasheet for ABIN6745240  
**anti-TFDP3 antibody (AA 71-120)**

1 Image

Overview

Quantity:	100 µL
Target:	TFDP3
Binding Specificity:	AA 71-120
Reactivity:	Human, Monkey
Host:	Rabbit
Clonality:	Polyclonal
Conjugate:	This TFDP3 antibody is un-conjugated
Application:	Western Blotting (WB)

Product Details

Immunogen:	Synthetic peptide located between aa71-120 of human TFDP3 (Q5H9I0, NP_057605). Percent identity by BLAST analysis: Human, Gibbon, Marmoset (100%), Gorilla (92%), Chimpanzee, Monkey (85%).  Type of Immunogen: Synthetic peptide
Specificity:	Human TFDP3
Predicted Reactivity:	Percent identity by BLAST analysis: Human (100%).
Purification:	Immunoaffinity purified

Target Details

Target:	TFDP3
---------	-------

## Target Details

---

Alternative Name: [TFDP3 \(TFDP3 Products\)](#)

Background: Name/Gene ID: TFDP3

Synonyms: TFDP3, CT30, Cancer/testis antigen 30, E2F-like, DP4, E2F-like protein, HCA661

Gene ID: 51270

NCBI Accession: [NP\\_057605](#)

UniProt: [Q5H9I0](#)

Pathways: [Cell Division Cycle](#)

## Application Details

---

Application Notes: Approved: WB (0.2 - 1 µg/mL)

Usage: Western Blot: Suggested dilution at 1 µg/mL in 5 % skim milk / PBS buffer, and HRP conjugated anti-Rabbit IgG should be diluted in 1: 50,000 - 100,000 as secondary antibody.

Comment: Target Species of Antibody: Human

Restrictions: For Research Use only

## Handling

---

Format: Lyophilized

Reconstitution: Distilled water

Concentration: Lot specific

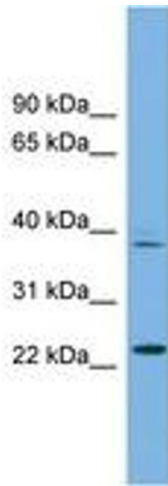
Buffer: Lyophilized from PBS with 2 % sucrose

Handling Advice: Avoid repeat freeze-thaw cycles.

Storage: 4 °C, -20 °C

Storage Comment: Long term: -20°C, the use of 50% glycerol is recommended if storing aliquots in -20°C for long term use (up to 1 year)

Short term (less than 1 week): 4°C. Avoid freeze-thaw cycles.



**Image 1.**