



[Go to Product page](#)

Datasheet for ABIN6745256
anti-MECOM antibody (AA 359-408)

1 Image

Overview

Quantity:	100 µL
Target:	MECOM
Binding Specificity:	AA 359-408
Reactivity:	Human
Host:	Rabbit
Clonality:	Polyclonal
Conjugate:	This MECOM antibody is un-conjugated
Application:	Western Blotting (WB)

Product Details

Immunogen: Synthetic peptide located between aa359-408 of human MECOM (Q03112, NP_005232).
Percent identity by BLAST analysis: Human (100%).

Type of Immunogen: Synthetic peptide

Specificity: Human MECOM

Predicted Reactivity: Percent identity by BLAST analysis:

Purification: Immunoaffinity purified

Target Details

Target: MECOM

Alternative Name: MECOM / EVI1 ([MECOM Products](#))

Target Details

Background: Name/Gene ID: MECOM

Synonyms: MECOM, AML1-EVI-1, EVI-1, EVI1, MDS1, MDS1 and EVI1 complex locus, MDS1-EVI1, Oncogene EVI1, AML1-EVI-1 fusion protein, Zinc finger protein Evi1, Myelodysplasia syndrome 1, PRDM3

Gene ID: 2122

NCBI Accession: [NP_005232](#)

UniProt: [Q03112](#)

Application Details

Application Notes: Approved: WB (0.2 - 1 µg/mL)

Usage: Western Blot: Suggested dilution at 1 µg/mL in 5 % skim milk / PBS buffer, and HRP conjugated anti-Rabbit IgG should be diluted in 1: 50,000 - 100,000 as secondary antibody.

Comment: Target Species of Antibody: Human

Restrictions: For Research Use only

Handling

Format: Lyophilized

Reconstitution: Distilled water

Concentration: Lot specific

Buffer: Lyophilized from PBS with 2 % sucrose

Handling Advice: Avoid repeat freeze-thaw cycles.

Storage: 4 °C,-20 °C

Storage Comment: Long term: -20°C, the use of 50% glycerol is recommended if storing aliquots in -20°C for long term use (up to 1 year)

Short term (less than 1 week): 4°C. Avoid freeze-thaw cycles.

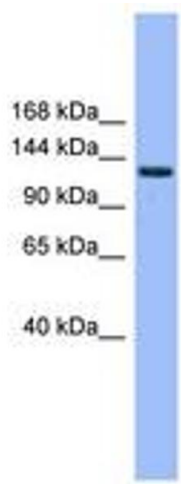


Image 1.