



[Go to Product page](#)

Datasheet for ABIN6745267  
**anti-FBXL16 antibody (AA 51-100)**

1 Image

Overview

Quantity:	100 µL
Target:	FBXL16
Binding Specificity:	AA 51-100
Reactivity:	Human, Mouse, Dog
Host:	Rabbit
Clonality:	Polyclonal
Conjugate:	This FBXL16 antibody is un-conjugated
Application:	Western Blotting (WB)

Product Details

Immunogen:	Synthetic peptide located between aa51-100 of human FBXL16 (Q8N461, NP_699181). Percent identity by BLAST analysis: Human, Gorilla (100%), Monkey, Marmoset, Bovine, Horse, Pig, Guinea pig (92%), Galago, Mouse, Rat, Panda, Dog, Bat (85%), Platypus (83%).  Type of Immunogen: Synthetic peptide
Specificity:	Human FBXL16
Predicted Reactivity:	Percent identity by BLAST analysis: Bovine, Horse, Pig (92%) Mouse, Dog (85%).
Purification:	Immunoaffinity purified

Target Details

Target:	FBXL16
---------	--------

## Target Details

---

Alternative Name:	FBXL16 ( <a href="#">FBXL16 Products</a> )
Background:	Name/Gene ID: FBXL16  Synonyms: FBXL16, C16orf22, C380A1.1, Fbl16, C380A1.1 (novel protein), F-box/LRR-repeat protein 16
Gene ID:	146330
NCBI Accession:	<a href="#">NP_699181</a>
UniProt:	<a href="#">Q8N461</a>

## Application Details

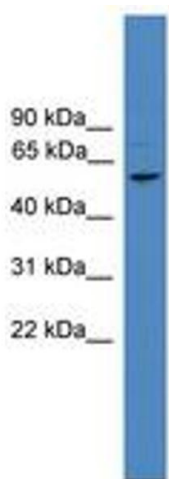
---

Application Notes:	Approved: WB (0.2 - 1 µg/mL)  Usage: Western Blot: Suggested dilution at 1 µg/mL in 5 % skim milk / PBS buffer, and HRP conjugated anti-Rabbit IgG should be diluted in 1: 50,000 - 100,000 as secondary antibody.
Comment:	Target Species of Antibody: Human
Restrictions:	For Research Use only

## Handling

---

Format:	Lyophilized
Reconstitution:	Distilled water
Concentration:	Lot specific
Buffer:	Lyophilized from PBS with 2 % sucrose
Handling Advice:	Avoid repeat freeze-thaw cycles.
Storage:	4 °C, -20 °C
Storage Comment:	Long term: -20°C, the use of 50% glycerol is recommended if storing aliquots in -20°C for long term use (up to 1 year)  Short term (less than 1 week): 4°C. Avoid freeze-thaw cycles.



**Image 1.**