



## Datasheet for ABIN6745268 **anti-TIMP4 antibody (AA 101-150)**



[Go to Product page](#)

### 1 Image

#### Overview

Quantity:	100 µL
Target:	TIMP4
Binding Specificity:	AA 101-150
Reactivity:	Human, Mouse, Cow, Horse, Rabbit, Dog, Bat, Monkey
Host:	Rabbit
Clonality:	Polyclonal
Conjugate:	This TIMP4 antibody is un-conjugated
Application:	Western Blotting (WB)

#### Product Details

Immunogen:	Synthetic peptide located between aa101-150 of human TIMP4 (Q99727, NP_003247). Percent identity by BLAST analysis: Human, Chimpanzee, Gorilla, Gibbon, Monkey, Marmoset, Elephant, Panda, Dog, Bovine, Bat, Rabbit, Horse (100%), Galago, Rat, Guinea pig (92%), Mouse, Turkey, Zebra finch, Chicken, Lizard (85%).  Type of Immunogen: Synthetic peptide
Specificity:	Human TIMP4
Predicted Reactivity:	Percent identity by BLAST analysis: Human, Dog, Bovine, Rabbit (100%) Rat (92%) Mouse, Chicken (85%).
Purification:	Immunoaffinity purified

## Target Details

---

Target: TIMP4

Alternative Name: TIMP4 ([TIMP4 Products](#))

Background: Name/Gene ID: TIMP4

Synonyms: TIMP4, Metalloproteinase inhibitor 4, TIMP-4

Gene ID: 7079

NCBI Accession: [NP\\_003247](#)

UniProt: [Q99727](#)

## Application Details

---

Application Notes: Approved: WB (0.2 - 1 µg/mL)

Usage: Western Blot: Suggested dilution at 1 µg/mL in 5 % skim milk / PBS buffer, and HRP conjugated anti-Rabbit IgG should be diluted in 1: 50,000 - 100,000 as secondary antibody.

Comment: Target Species of Antibody: Human

Restrictions: For Research Use only

## Handling

---

Format: Lyophilized

Reconstitution: Distilled water

Concentration: Lot specific

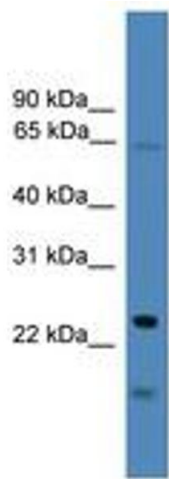
Buffer: Lyophilized from PBS with 2 % sucrose

Handling Advice: Avoid repeat freeze-thaw cycles.

Storage: 4 °C, -20 °C

Storage Comment: Long term: -20°C, the use of 50% glycerol is recommended if storing aliquots in -20°C for long term use (up to 1 year)

Short term (less than 1 week): 4°C. Avoid freeze-thaw cycles.



**Image 1.**