



[Go to Product page](#)

Datasheet for ABIN6745281
anti-CDC26 antibody (AA 21-70)

1 Image

Overview

Quantity:	100 µL
Target:	CDC26
Binding Specificity:	AA 21-70
Reactivity:	Human, Mouse, Rat, Cow, Dog, Horse, Rabbit, Monkey
Host:	Rabbit
Clonality:	Polyclonal
Conjugate:	This CDC26 antibody is un-conjugated
Application:	Western Blotting (WB)

Product Details

Immunogen:	Synthetic peptide located between aa21-70 of human CDC26 (Q8NHZ8, NP_644815). Percent identity by BLAST analysis: Human, Chimpanzee, Gorilla, Orangutan, Monkey, Marmoset, Mouse, Rat, Elephant, Panda, Dog, Bovine, Rabbit, Horse (100%), Gibbon, Galago, Bat, Platypus (92%), Guinea pig (85%). Type of Immunogen: Synthetic peptide
Specificity:	Human CDC26
Predicted Reactivity:	Percent identity by BLAST analysis: Human, Mouse, Rat, Dog, Bovine (100%).
Purification:	Immunoaffinity purified

Target Details

Target:	CDC26
Alternative Name:	CDC26 (CDC26 Products)
Background:	Name/Gene ID: CDC26 Synonyms: CDC26, C9orf17, ANAPC12, APC12, Cell division cycle 26
Gene ID:	246184
NCBI Accession:	NP_644815
UniProt:	Q8NHZ8

Application Details

Application Notes:	Approved: WB (0.2 - 1 µg/mL) Usage: Western Blot: Suggested dilution at 1 µg/mL in 5 % skim milk / PBS buffer, and HRP conjugated anti-Rabbit IgG should be diluted in 1: 50,000 - 100,000 as secondary antibody.
Comment:	Target Species of Antibody: Human
Restrictions:	For Research Use only

Handling

Format:	Lyophilized
Reconstitution:	Distilled water
Concentration:	Lot specific
Buffer:	Lyophilized from PBS with 2 % sucrose
Handling Advice:	Avoid repeat freeze-thaw cycles.
Storage:	4 °C, -20 °C
Storage Comment:	Long term: -20°C, the use of 50% glycerol is recommended if storing aliquots in -20°C for long term use (up to 1 year) Short term (less than 1 week): 4°C. Avoid freeze-thaw cycles.

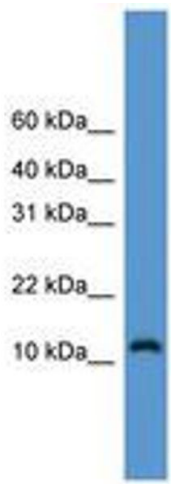


Image 1.