



[Go to Product page](#)

Datasheet for ABIN6745287
anti-USP35 antibody (C-Term)

1 Image

Overview

Quantity:	100 µL
Target:	USP35
Binding Specificity:	C-Term
Reactivity:	Human, Rat, Rabbit, Dog, Cow, Monkey
Host:	Rabbit
Clonality:	Polyclonal
Conjugate:	This USP35 antibody is un-conjugated
Application:	Western Blotting (WB)

Product Details

Immunogen:	Synthetic peptide from C-Terminus of human USP35 (Q9P2H5, NP_065849). Percent identity by BLAST analysis: Human, Gorilla, Monkey, Galago, Marmoset, Rat, Elephant, Dog, Rabbit (100%), Bat (92%), Opossum (86%), Bovine (83%). Type of Immunogen: Synthetic peptide
Specificity:	Human USP35
Predicted Reactivity:	Percent identity by BLAST analysis: Human, Rat, Dog, Rabbit (100%) Bovine (83%).
Purification:	Immunoaffinity purified

Target Details

Target:	USP35
---------	-------

Target Details

Alternative Name: [USP35 \(USP35 Products\)](#)

Background: Name/Gene ID: USP35

Synonyms: USP35, Deubiquitinating enzyme 35, KIAA1372, Ubiquitin thiolesterase 35, Ubiquitin thioesterase 35, Ubiquitin specific protease 35

Gene ID: 57558

NCBI Accession: [NP_065849](#)

UniProt: [Q9P2H5](#)

Application Details

Application Notes: Approved: WB (0.2 - 1 µg/mL)

Usage: Western Blot: Suggested dilution at 1 µg/mL in 5 % skim milk / PBS buffer, and HRP conjugated anti-Rabbit IgG should be diluted in 1: 50,000 - 100,000 as secondary antibody.

Comment: Target Species of Antibody: Human

Restrictions: For Research Use only

Handling

Format: Lyophilized

Reconstitution: Distilled water

Concentration: Lot specific

Buffer: Lyophilized from PBS with 2 % sucrose

Handling Advice: Avoid repeat freeze-thaw cycles.

Storage: 4 °C, -20 °C

Storage Comment: Long term: -20°C, the use of 50% glycerol is recommended if storing aliquots in -20°C for long term use (up to 1 year)

Short term (less than 1 week): 4°C. Avoid freeze-thaw cycles.

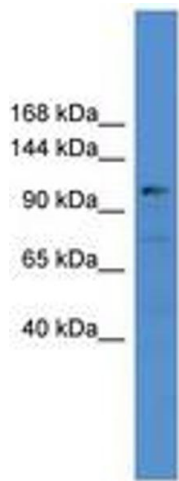


Image 1.