



[Go to Product page](#)

Datasheet for ABIN674529

anti-Aromatase antibody (AA 41-140)

3 Images

2 Publications

Overview

Quantity:	100 µL
Target:	Aromatase (CYP19A1)
Binding Specificity:	AA 41-140
Reactivity:	Human, Rat, Mouse, Cow
Host:	Rabbit
Clonality:	Polyclonal
Conjugate:	This Aromatase antibody is un-conjugated
Application:	Western Blotting (WB), ELISA, Immunohistochemistry (Paraffin-embedded Sections) (IHC (p)), Immunofluorescence (Paraffin-embedded Sections) (IF (p)), Immunocytochemistry (ICC), Flow Cytometry (FACS), Immunofluorescence (Cultured Cells) (IF (cc)), Immunohistochemistry (Frozen Sections) (IHC (fro))

Product Details

Immunogen:	KLH conjugated synthetic peptide derived from human Aromatase
Isotype:	IgG
Cross-Reactivity:	Cow, Human, Mouse, Rat
Predicted Reactivity:	Dog,Cow,Sheep,Pig,Horse,Rabbit
Purification:	Purified by Protein A.

Target Details

Target:	Aromatase (CYP19A1)
---------	---------------------

Target Details

Alternative Name: [Aromatase \(CYP19A1 Products\)](#)

Background: Synonyms: ARO, ARO1, CPV1, CYAR, CYP19, CYPXIX, P-45AROM, Aromatase, Cytochrome P-45AROM, Cytochrome P45 19A1, Estrogen synthase, CYP19A1

Background: This gene encodes a member of the cytochrome P450 superfamily of enzymes. The cytochrome P450 proteins are monooxygenases which catalyze many reactions involved in drug metabolism and synthesis of cholesterol, steroids and other lipids. This protein localizes to the endoplasmic reticulum and catalyzes the last steps of estrogen biosynthesis, three successive hydroxylations of the A ring of androgens. Mutations in this gene can result in either increased or decreased aromatase activity, the associated phenotypes suggest that estrogen functions both as a sex steroid hormone and in growth or differentiation. The gene expresses two transcript variants. Belongs to the cytochrome P450 family.

Gene ID: 1588

UniProt: [P11511](#)

Pathways: [Metabolism of Steroid Hormones and Vitamin D](#), [Steroid Hormone Biosynthesis](#), [C21-Steroid Hormone Metabolic Process](#), [Carbohydrate Homeostasis](#)

Application Details

Application Notes: WB 1:300-5000
ELISA 1:500-1000
FCM 1:20-100
IHC-P 1:200-400
IHC-F 1:100-500
IF(IHC-P) 1:50-200
IF(IHC-F) 1:50-200
IF(ICC) 1:50-200
ICC 1:100-500

Restrictions: For Research Use only

Handling

Format: Liquid

Concentration: 1 µg/µL

Buffer: 0.01M TBS(pH 7.4) with 1 % BSA, 0.02 % Proclin300 and 50 % Glycerol.

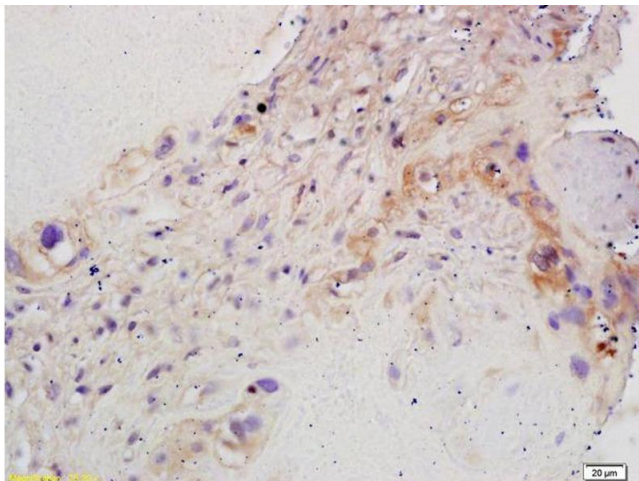
Handling

Preservative:	ProClin
Precaution of Use:	This product contains ProClin: a POISONOUS AND HAZARDOUS SUBSTANCE, which should be handled by trained staff only.
Storage:	4 °C,-20 °C
Storage Comment:	Shipped at 4°C. Store at -20°C for one year. Avoid repeated freeze/thaw cycles.
Expiry Date:	12 months

Publications

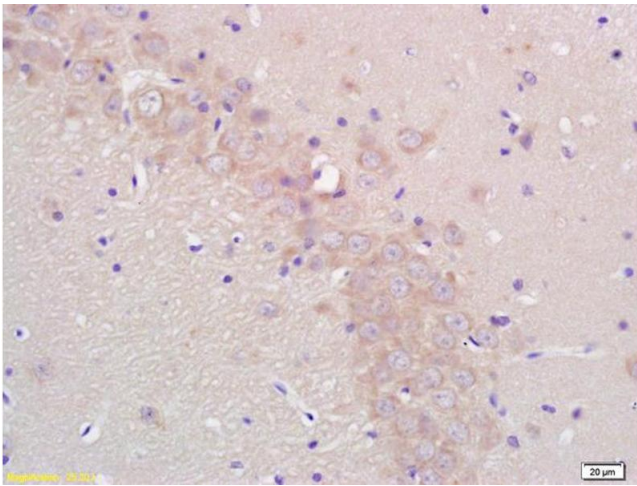
- Product cited in:
- Gan, Chen, Deng, Yuan, Kang, Qiu, Sun, Han, Hu, Li, Wang: "Establishment of an in vitro culture model of theca cells from hierarchical follicles in ducks." in: **Bioscience reports**, Vol. 37, Issue 3, (2017) ([PubMed](#)).
- Lan, Chen, Jan, Chen, Ho: "Differentiation of human embryonic stem cells into functional ovarian granulosa-like cells." in: **The Journal of clinical endocrinology and metabolism**, Vol. 98, Issue 9, pp. 3713-23, (2013) ([PubMed](#)).

Images



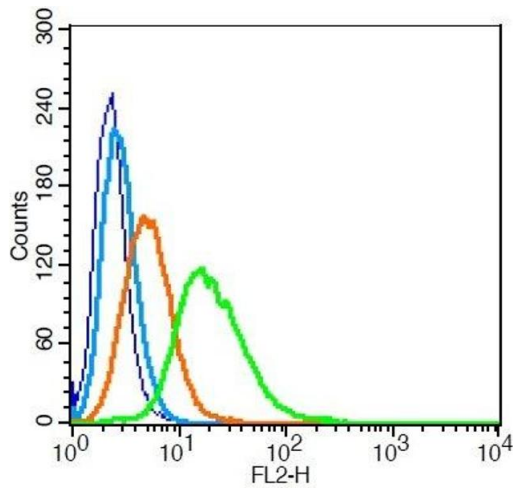
Immunohistochemistry

Image 1. Formalin-fixed and paraffin embedded human placenta labeled with Rabbit Anti CYP19/CYP19A1 Polyclonal Antibody, Unconjugated (ABIN674529) at 1:200 followed by conjugation to the secondary antibody and DAB staining



Immunohistochemistry

Image 2. Formalin-fixed and paraffin embedded rat brain labeled with Rabbit Anti CYP19/CYP19A1 Polyclonal Antibody, Unconjugated (ABIN674529) at 1:200 followed by conjugation to the secondary antibody and DAB staining



Flow Cytometry

Image 3. RSC96 cells probed with Aromatase Polyclonal Antibody, Unconjugated at 1:20 for 30 minutes followed by incubation with a conjugated secondary (PE Conjugated) (green) for 30 minutes compared to control cells (blue), secondary only (light blue) and isotype control (orange).