



## Datasheet for ABIN6745292 anti-PSMD9 antibody (AA 71-120)



[Go to Product page](#)

### 1 Image

#### Overview

Quantity:	100 µL
Target:	PSMD9
Binding Specificity:	AA 71-120
Reactivity:	Human, Mouse, Rat, Horse, Dog, Rabbit, Hamster, Monkey
Host:	Rabbit
Clonality:	Polyclonal
Conjugate:	This PSMD9 antibody is un-conjugated
Application:	Western Blotting (WB)

#### Product Details

Immunogen:	Synthetic peptide located between aa71-120 of human PSMD9 (O00233, NP_002804). Percent identity by BLAST analysis: Human, Chimpanzee, Gorilla, Gibbon, Monkey, Marmoset, Mouse, Rat, Hamster, Dog, Rabbit, Horse (100%), Bovine, Guinea pig (92%), Pig (85%), Chicken (83%).  Type of Immunogen: Synthetic peptide
Specificity:	Human PSMD9 / 26S Proteasome
Predicted Reactivity:	Percent identity by BLAST analysis: Human, Mouse, Rat, Dog (100%) Bovine (92%) Chicken (83%).
Purification:	Immunoaffinity purified

## Target Details

---

Target:	PSMD9
Alternative Name:	PSMD9 / 26S Proteasome ( <a href="#">PSMD9 Products</a> )
Background:	Name/Gene ID: PSMD9 Family: Protease Regulatory  Synonyms: PSMD9, 26S Proteasome, Homolog of rat Bridge 1, p27, Rpn4, Proteasome subunit p27
Gene ID:	5715
NCBI Accession:	<a href="#">NP_002804</a>
UniProt:	<a href="#">O00233</a>
Pathways:	<a href="#">Positive Regulation of Peptide Hormone Secretion</a> , <a href="#">Negative Regulation of Hormone Secretion</a> , <a href="#">Mitotic G1-G1/S Phases</a> , <a href="#">DNA Replication</a> , <a href="#">Synthesis of DNA</a> , <a href="#">Ubiquitin Proteasome Pathway</a>

## Application Details

---

Application Notes:	Approved: WB (0.2 - 1 µg/mL)  Usage: Western Blot: Suggested dilution at 1 µg/mL in 5 % skim milk / PBS buffer, and HRP conjugated anti-Rabbit IgG should be diluted in 1: 50,000 - 100,000 as secondary antibody.
Comment:	Target Species of Antibody: Human
Restrictions:	For Research Use only

## Handling

---

Format:	Lyophilized
Reconstitution:	Distilled water
Concentration:	Lot specific
Buffer:	Lyophilized from PBS with 2 % sucrose
Handling Advice:	Avoid repeat freeze-thaw cycles.
Storage:	4 °C,-20 °C
Storage Comment:	Long term: -20°C, the use of 50% glycerol is recommended if storing aliquots in -20°C for long term use (up to 1 year)

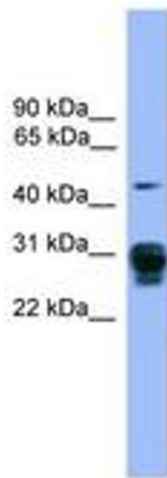
## Handling

---

Short term (less than 1 week): 4°C. Avoid freeze-thaw cycles.

## Images

---



**Image 1.**