



[Go to Product page](#)

Datasheet for ABIN6745300
anti-UBL4A antibody (AA 81-130)

1 Image

Overview

Quantity:	100 µL
Target:	UBL4A
Binding Specificity:	AA 81-130
Reactivity:	Human, Rat, Rabbit, Monkey
Host:	Rabbit
Clonality:	Polyclonal
Conjugate:	This UBL4A antibody is un-conjugated
Application:	Western Blotting (WB)

Product Details

Immunogen:	Synthetic peptide located between aa81-130 of human UBL4A (B7NZQ9, NP_055050). Percent identity by BLAST analysis: Human, Chimpanzee, Gorilla, Gibbon, Monkey, Galago, Marmoset, Rat, Rabbit, Armadillo (100%), Orangutan, Mouse, Dog, Bovine, Bat, Horse, Guinea pig (92%), Platypus, Lizard (91%), Elephant (84%). Type of Immunogen: Synthetic peptide
Specificity:	Human UBL4A
Predicted Reactivity:	Percent identity by BLAST analysis: Human, Rabbit (100%) Mouse, Rat, Dog, Bovine, Horse, Guinea pig (92%).
Purification:	Immunoaffinity purified

Target Details

Target:	UBL4A
Alternative Name:	UBL4A (UBL4A Products)
Background:	Name/Gene ID: UBL4A Synonyms: UBL4A, DX254E, GDX, GET5, UBL4, Ubiquitin-like protein 4A, TMA24, Ubiquitin-like 4, Ubiquitin-like 4A, Ubiquitin-like protein GDX, DXS254E, MDY2
Gene ID:	8266
NCBI Accession:	NP_055050
UniProt:	P11441
Pathways:	Ubiquitin Proteasome Pathway

Application Details

Application Notes:	Approved: WB (0.2 - 1 µg/mL) Usage: Western Blot: Suggested dilution at 1 µg/mL in 5 % skim milk / PBS buffer, and HRP conjugated anti-Rabbit IgG should be diluted in 1: 50,000 - 100,000 as secondary antibody.
Comment:	Target Species of Antibody: Human
Restrictions:	For Research Use only

Handling

Format:	Lyophilized
Reconstitution:	Distilled water
Concentration:	Lot specific
Buffer:	Lyophilized from PBS with 2 % sucrose
Handling Advice:	Avoid repeat freeze-thaw cycles.
Storage:	4 °C,-20 °C
Storage Comment:	Long term: -20°C, the use of 50% glycerol is recommended if storing aliquots in -20°C for long term use (up to 1 year) Short term (less than 1 week): 4°C. Avoid freeze-thaw cycles.

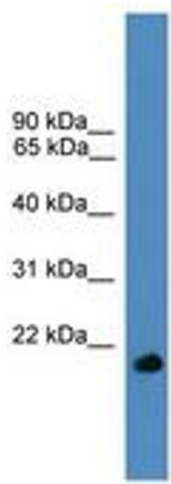


Image 1.