



[Go to Product page](#)

Datasheet for ABIN6745303
anti-UBTD1 antibody (AA 131-180)

1 Image

Overview

Quantity:	100 µL
Target:	UBTD1
Binding Specificity:	AA 131-180
Reactivity:	Human, Mouse, Rat, Cow, Dog, Guinea Pig, Horse, Rabbit, Zebrafish (Danio rerio), Bat, Hamster, Monkey, Pig
Host:	Rabbit
Clonality:	Polyclonal
Conjugate:	This UBTD1 antibody is un-conjugated
Application:	Western Blotting (WB)

Product Details

Immunogen:	Synthetic peptide located between aa131-180 of human UBTD1 (Q9HAC8, NP_079230). Percent identity by BLAST analysis: Human, Chimpanzee, Gorilla, Gibbon, Monkey, Galago, Marmoset, Mouse, Rat, Hamster, Elephant, Panda, Dog, Bovine, Bat, Rabbit, Horse, Pig, Guinea pig (100%), Platypus, Lizard, Xenopus (92%), Zebra finch, Zebrafish (85%). Type of Immunogen: Synthetic peptide
Specificity:	Human UBTD1
Predicted Reactivity:	Percent identity by BLAST analysis: Human, Mouse, Rat, Dog, Bovine, Horse (100%) Zebrafish (85%).
Purification:	Immunoaffinity purified

Target Details

Target:	UBTD1
Alternative Name:	UBTD1 (UBTD1 Products)
Background:	Name/Gene ID: UBTD1 Synonyms: UBTD1, Ubiquitin domain containing 1
Gene ID:	80019
NCBI Accession:	NP_079230
UniProt:	Q9HAC8

Application Details

Application Notes:	Approved: WB (0.2 - 1 µg/mL) Usage: Western Blot: Suggested dilution at 1 µg/mL in 5 % skim milk / PBS buffer, and HRP conjugated anti-Rabbit IgG should be diluted in 1: 50,000 - 100,000 as secondary antibody.
Comment:	Target Species of Antibody: Human
Restrictions:	For Research Use only

Handling

Format:	Lyophilized
Reconstitution:	Distilled water
Concentration:	Lot specific
Buffer:	Lyophilized from PBS with 2 % sucrose
Handling Advice:	Avoid repeat freeze-thaw cycles.
Storage:	4 °C, -20 °C
Storage Comment:	Long term: -20°C, the use of 50% glycerol is recommended if storing aliquots in -20°C for long term use (up to 1 year) Short term (less than 1 week): 4°C. Avoid freeze-thaw cycles.

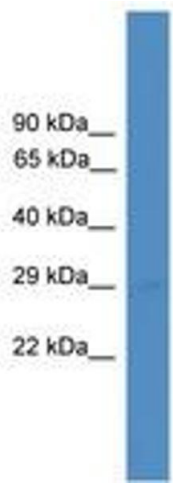


Image 1.