



[Go to Product page](#)

Datasheet for ABIN6745308

## anti-Contactin 1 antibody (AA 301-350)

### 1 Image

#### Overview

Quantity:	100 µL
Target:	Contactin 1 (CNTN1)
Binding Specificity:	AA 301-350
Reactivity:	Human, Mouse, Rat, Pig, Guinea Pig, Horse, Monkey
Host:	Rabbit
Clonality:	Polyclonal
Conjugate:	This Contactin 1 antibody is un-conjugated
Application:	Western Blotting (WB)

#### Product Details

Immunogen:	Synthetic peptide located between aa301-350 of human CNTN1 (Q12860, NP_001834). Percent identity by BLAST analysis: Human, Chimpanzee, Gorilla, Orangutan, Gibbon, Monkey, Marmoset, Mouse, Rat, Pig, Guinea pig (100%), Galago, Dog, Bovine, Rabbit, Opossum (92%), Elephant, Horse, Turkey, Zebra finch, Chicken, Platypus (85%), Bat (84%).  Type of Immunogen: Synthetic peptide
Specificity:	Human CNTN1 / Contactin 1
Predicted Reactivity:	Percent identity by BLAST analysis: Human, Mouse, Rat, Pig, Guinea pig (100%) Dog, Bovine, Rabbit (92%) Horse, Chicken (85%).
Purification:	Immunoaffinity purified

## Target Details

---

Target:	Contactin 1 (CNTN1)
Alternative Name:	CNTN1 / gp135 / Contactin 1 ( <a href="#">CNTN1 Products</a> )
Background:	Name/Gene ID: CNTN1 Family: Immunoglobulin  Synonyms: CNTN1, Contactin, Contactin 1, Glycoprotein gp135, gp135, Neural cell surface protein F3, Contactin-1
Gene ID:	1272
NCBI Accession:	<a href="#">NP_001834</a>
UniProt:	<a href="#">Q12860</a>

## Application Details

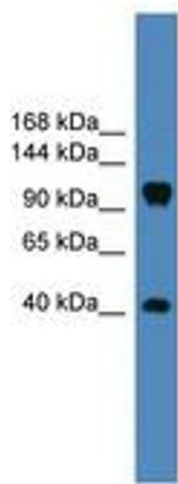
---

Application Notes:	Approved: WB (0.2 - 1 µg/mL)  Usage: Western Blot: Suggested dilution at 1 µg/mL in 5 % skim milk / PBS buffer, and HRP conjugated anti-Rabbit IgG should be diluted in 1: 50,000 - 100,000 as secondary antibody.
Comment:	Target Species of Antibody: Human
Restrictions:	For Research Use only

## Handling

---

Format:	Lyophilized
Reconstitution:	Distilled water
Concentration:	Lot specific
Buffer:	Lyophilized from PBS with 2 % sucrose
Handling Advice:	Avoid repeat freeze-thaw cycles.
Storage:	4 °C,-20 °C
Storage Comment:	Long term: -20°C, the use of 50% glycerol is recommended if storing aliquots in -20°C for long term use (up to 1 year) Short term (less than 1 week): 4°C. Avoid freeze-thaw cycles.



**Image 1.**