



[Go to Product page](#)

Datasheet for ABIN6745323

anti-LRRFIP2 antibody (AA 51-100)

1 Image

Overview

Quantity:	100 µL
Target:	LRRFIP2
Binding Specificity:	AA 51-100
Reactivity:	Human, Rat, Mouse, Horse, Rabbit, Cow, Dog, Zebrafish (Danio rerio), Monkey, Bat
Host:	Rabbit
Clonality:	Polyclonal
Conjugate:	This LRRFIP2 antibody is un-conjugated
Application:	Western Blotting (WB)

Product Details

Immunogen:	Synthetic peptide located between aa51-100 of human LRRFIP2 (A8K649, NP_001127841). Percent identity by BLAST analysis: Human, Chimpanzee, Gorilla, Gibbon, Monkey, Galago, Marmoset, Mouse, Rat, Elephant, Panda, Dog, Bovine, Bat, Rabbit, Horse (100%), Platypus (92%), Opossum (90%). Type of Immunogen: Synthetic peptide
Specificity:	Human LRRFIP2
Predicted Reactivity:	Percent identity by BLAST analysis: Human, Mouse, Rat, Dog, Rabbit, Horse (100%).
Purification:	Immunoaffinity purified

Target Details

Target:	LRRFIP2
Alternative Name:	HUFI-2 / LRRFIP2 (LRRFIP2 Products)
Background:	Name/Gene ID: LRRFIP2 Synonyms: LRRFIP2, LRR FLII-interacting protein 2, HUFI-2
Gene ID:	9209
NCBI Accession:	NP_001127841
UniProt:	Q9Y608

Application Details

Application Notes:	Approved: WB (0.2 - 1 µg/mL) Usage: Western Blot: Suggested dilution at 1 µg/mL in 5 % skim milk / PBS buffer, and HRP conjugated anti-Rabbit IgG should be diluted in 1: 50,000 - 100,000 as secondary antibody.
Comment:	Target Species of Antibody: Human
Restrictions:	For Research Use only

Handling

Format:	Lyophilized
Reconstitution:	Distilled water
Concentration:	Lot specific
Buffer:	Lyophilized from PBS with 2 % sucrose
Handling Advice:	Avoid repeat freeze-thaw cycles.
Storage:	4 °C, -20 °C
Storage Comment:	Long term: -20°C, the use of 50% glycerol is recommended if storing aliquots in -20°C for long term use (up to 1 year) Short term (less than 1 week): 4°C. Avoid freeze-thaw cycles.

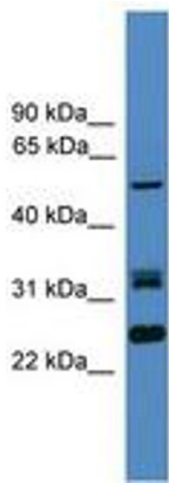


Image 1.