



## Datasheet for ABIN6745325 **anti-CST9 antibody (AA 71-120)**



[Go to Product page](#)

### 1 Image

#### Overview

Quantity:	100 µL
Target:	CST9
Binding Specificity:	AA 71-120
Reactivity:	Human, Monkey
Host:	Rabbit
Clonality:	Polyclonal
Conjugate:	This CST9 antibody is un-conjugated
Application:	Western Blotting (WB)

#### Product Details

Immunogen:	Synthetic peptide located between aa71-120 of human CST9 (Q5W186, NP_001008693). Percent identity by BLAST analysis: Human, Gorilla, Gibbon, Monkey (100%), Marmoset (85%).  Type of Immunogen: Synthetic peptide
Specificity:	Human CST9
Predicted Reactivity:	Percent identity by BLAST analysis: Human (100%).
Purification:	Immunoaffinity purified

#### Target Details

Target:	CST9
Alternative Name:	CST9 ( <a href="#">CST9 Products</a> )

## Target Details

---

Background: Name/Gene ID: CST9

Synonyms: CST9, CLM, Cystatin 9 (testatin), Cystatin-like molecule, CTES7A, Cystatin-9

Gene ID: 128822

NCBI Accession: [NP\\_001008693](#)

UniProt: [Q5W186](#)

## Application Details

---

Application Notes: Approved: WB (0.12 µg/mL)

Usage: Western Blot: Suggested dilution at 0.125 µg/mL in 5 % skim milk / PBS buffer, and HRP conjugated anti-Rabbit IgG should be diluted in 1: 50,000 - 100,000 as secondary antibody.

Comment: Target Species of Antibody: Human

Restrictions: For Research Use only

## Handling

---

Format: Lyophilized

Reconstitution: Distilled water

Concentration: Lot specific

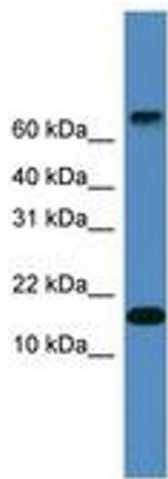
Buffer: Lyophilized from PBS with 2 % sucrose

Handling Advice: Avoid repeat freeze-thaw cycles.

Storage: 4 °C, -20 °C

Storage Comment: Long term: -20°C, the use of 50% glycerol is recommended if storing aliquots in -20°C for long term use (up to 1 year)

Short term (less than 1 week): 4°C. Avoid freeze-thaw cycles.



**Image 1.**