

Datasheet for ABIN6745362 anti-XYLT1 antibody (AA 551-600)



[Go to Product page](#)

1 Image

Overview

Quantity:	100 µL
Target:	XYLT1
Binding Specificity:	AA 551-600
Reactivity:	Human, Mouse, Rat, Rabbit, Cow, Zebrafish (Danio rerio), Dog, Guinea Pig, Horse, Bat, Monkey, Pig
Host:	Rabbit
Clonality:	Polyclonal
Conjugate:	This XYLT1 antibody is un-conjugated
Application:	Western Blotting (WB)

Product Details

Immunogen:	Synthetic peptide located between aa551-600 of human XYLT1 (Q86Y38, NP_071449). Percent identity by BLAST analysis: Human, Chimpanzee, Gorilla, Gibbon, Monkey, Galago, Marmoset, Mouse, Rat, Elephant, Dog, Bovine, Bat, Rabbit, Horse, Pig, Guinea pig (100%), Opossum, Turkey, Zebra finch, Chicken, Xenopus (92%), Panda, Lizard (84%). Type of Immunogen: Synthetic peptide
Specificity:	Human XYLT1
Predicted Reactivity:	Percent identity by BLAST analysis: Human, Mouse, Rat, Dog, Bovine, Rabbit, Horse, Pig, Guinea pig (100%) Chicken (92%) Xenopus (91%).
Purification:	Immunoaffinity purified

Target Details

Target:	XYLT1
Alternative Name:	XYLT1 / XylT-I (XYLT1 Products)
Background:	Name/Gene ID: XYLT1 Synonyms: XYLT1, Beta-D-xylosyltransferase 1, O-xylosyltransferase 1, PXYLT1, Xylosyltransferase I, Xylosyltransferase iota, XylT-I, XT-I, XT1, Xylosyltransferase 1, Peptide O-xylosyltransferase 1, XTI, XYLT1
Gene ID:	64131
NCBI Accession:	NP_071449
UniProt:	Q86Y38
Pathways:	Glycosaminoglycan Metabolic Process

Application Details

Application Notes:	Approved: WB (0.2 - 1 µg/mL) Usage: Western Blot: Suggested dilution at 1 µg/mL in 5 % skim milk / PBS buffer, and HRP conjugated anti-Rabbit IgG should be diluted in 1: 50,000 - 100,000 as secondary antibody.
Comment:	Target Species of Antibody: Human
Restrictions:	For Research Use only

Handling

Format:	Lyophilized
Reconstitution:	Distilled water
Concentration:	Lot specific
Buffer:	Lyophilized from PBS with 2 % sucrose
Handling Advice:	Avoid repeat freeze-thaw cycles.
Storage:	4 °C, -20 °C
Storage Comment:	Long term: -20°C, the use of 50% glycerol is recommended if storing aliquots in -20°C for long term use (up to 1 year) Short term (less than 1 week): 4°C. Avoid freeze-thaw cycles.

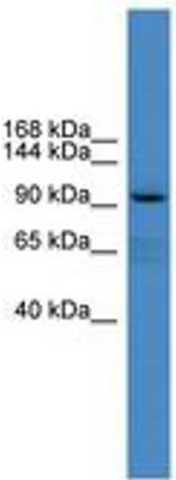


Image 1.