



[Go to Product page](#)

Datasheet for ABIN6745371

anti-Caspase 4 antibody (AA 211-260)

1 Image

Overview

Quantity:	100 µL
Target:	Caspase 4 (CASP4)
Binding Specificity:	AA 211-260
Reactivity:	Human
Host:	Rabbit
Clonality:	Polyclonal
Conjugate:	This Caspase 4 antibody is un-conjugated
Application:	Western Blotting (WB)

Product Details

Immunogen:	Synthetic peptide located between aa211-260 of human CASP4 (P49662, NP_001216). Percent identity by BLAST analysis: Human, Chimpanzee, Gibbon (100%), Monkey (86%), Gorilla, Marmoset (80%). Type of Immunogen: Synthetic peptide
Specificity:	Human CASP4 / Caspase 4
Predicted Reactivity:	Percent identity by BLAST analysis: Human (100%).
Purification:	Immunoaffinity purified

Target Details

Target:	Caspase 4 (CASP4)
---------	-------------------

Target Details

Alternative Name:	CASP4 / Caspase 4 (CASP4 Products)
Background:	Name/Gene ID: CASP4 Subfamily: Cysteine C14 Family: Protease Synonyms: CASP4, CASP-4, Casp11, Caspase 4, Caspase-4, Cysteine protease icerel-ii, ICE(rel)-II, ICE(rel)II, ICH-2, Ich-3, ICH2, Protease ICH-2, TX, Tx protease, Caspase 11, ICEREL-II, Mih1/TX, Protease TX
Gene ID:	837
NCBI Accession:	NP_001216
UniProt:	P49662
Pathways:	Apoptosis , Caspase Cascade in Apoptosis , Positive Regulation of Endopeptidase Activity

Application Details

Application Notes:	Approved: WB (0.2 - 1 µg/mL) Usage: Western Blot: Suggested dilution at 1 µg/mL in 5 % skim milk / PBS buffer, and HRP conjugated anti-Rabbit IgG should be diluted in 1: 50,000 - 100,000 as secondary antibody.
Comment:	Target Species of Antibody: Human
Restrictions:	For Research Use only

Handling

Format:	Lyophilized
Reconstitution:	Distilled water
Concentration:	Lot specific
Buffer:	Lyophilized from PBS with 2 % sucrose
Handling Advice:	Avoid repeat freeze-thaw cycles.
Storage:	4 °C, -20 °C
Storage Comment:	Long term: -20°C, the use of 50% glycerol is recommended if storing aliquots in -20°C for long term use (up to 1 year)

Handling

Short term (less than 1 week): 4°C. Avoid freeze-thaw cycles.

Images

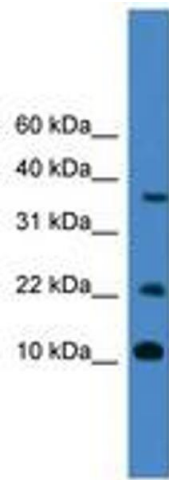


Image 1.