

Datasheet for ABIN6745373
anti-HMGB1 antibody (AA 21-70)



[Go to Product page](#)

1 Image

Overview

Quantity:	100 µL
Target:	HMGB1
Binding Specificity:	AA 21-70
Reactivity:	Human, Mouse, Rat, Cow, Dog, Pig, Guinea Pig, Horse, Rabbit, Monkey, Chicken, Hamster, Bat
Host:	Rabbit
Clonality:	Polyclonal
Conjugate:	This HMGB1 antibody is un-conjugated
Application:	Western Blotting (WB)

Product Details

Immunogen:	Synthetic peptide located between aa21-70 of human HMGB1 (P09429, NP_002119). Percent identity by BLAST analysis: Human, Chimpanzee, Gorilla, Gibbon, Baboon, Monkey, Galago, Marmoset, Mouse, Rat, Shrew, Hamster, Elephant, Panda, Dog, Bovine, Bat, Rabbit, Horse, Pig, Guinea pig, Turkey, Zebra finch, Chicken, Platypus (100%), Lizard, Xenopus, Trout, Salmon, Sablefish, Zebrafish (92%). Type of Immunogen: Synthetic peptide
Specificity:	Human HMGB1
Predicted Reactivity:	Percent identity by BLAST analysis: Human, Mouse, Rat, Dog, Bovine, Rabbit, Horse, Pig, Chicken (100%) Xenopus, Zebrafish (92%).
Purification:	Immunoaffinity purified

Target Details

Target:	HMGB1
Alternative Name:	HMG1 / HMGB1 (HMGB1 Products)
Background:	Name/Gene ID: HMGB1 Synonyms: HMGB1, Amphoterin, High mobility group protein B1, High mobility group box 1, High mobility group protein 1, HMG1, HMG3, SBP-1, High-mobility group box 1, HMG-1
Gene ID:	3146
NCBI Accession:	NP_002119
UniProt:	P09429
Pathways:	p53 Signaling , Regulation of Muscle Cell Differentiation , Skeletal Muscle Fiber Development , Positive Regulation of Endopeptidase Activity , Regulation of Carbohydrate Metabolic Process , Toll-Like Receptors Cascades , Smooth Muscle Cell Migration , Inflammasome

Application Details

Application Notes:	Approved: WB (0.2 - 1 µg/mL) Usage: Western Blot: Suggested dilution at 0.25 µg/mL in 5 % skim milk / PBS buffer, and HRP conjugated anti-Rabbit IgG should be diluted in 1: 50,000 - 100,000 as secondary antibody.
Comment:	Target Species of Antibody: Human
Restrictions:	For Research Use only

Handling

Format:	Lyophilized
Reconstitution:	Distilled water
Concentration:	Lot specific
Buffer:	Lyophilized from PBS with 2 % sucrose
Handling Advice:	Avoid repeat freeze-thaw cycles.
Storage:	4 °C,-20 °C
Storage Comment:	Long term: -20°C, the use of 50% glycerol is recommended if storing aliquots in -20°C for long term use (up to 1 year)

Handling

Short term (less than 1 week): 4°C. Avoid freeze-thaw cycles.

Images

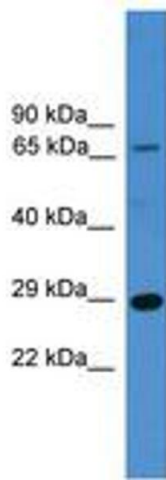


Image 1.