

Datasheet for ABIN6745379
anti-SERPINB8 antibody (AA 161-210)[Go to Product page](#)

1 Image

Overview

Quantity:	100 µL
Target:	SERPINB8
Binding Specificity:	AA 161-210
Reactivity:	Human, Mouse, Rat, Dog
Host:	Rabbit
Clonality:	Polyclonal
Conjugate:	This SERPINB8 antibody is un-conjugated
Application:	Western Blotting (WB)

Product Details

Immunogen:	Synthetic peptide located between aa161-210 of human SERPINB8 (Q8N178, NP_001027018). Percent identity by BLAST analysis: Human, Chimpanzee, Gorilla, Baboon, Monkey (100%), Gibbon, Marmoset, Bovine, Bat, Rabbit, Pig, Guinea pig (92%), Mouse, Rat, Shrew, Hamster, Elephant, Dog, Horse, Armadillo (85%). Type of Immunogen: Synthetic peptide
Specificity:	Human SERPINB8
Predicted Reactivity:	Percent identity by BLAST analysis: Human (100%) Rabbit, Pig (92%) Mouse, Rat, Dog (85%).
Purification:	Immunoaffinity purified

Target Details

Target:	SERPINB8
Alternative Name:	SERPINB8 (SERPINB8 Products)
Background:	Name/Gene ID: SERPINB8 Synonyms: SERPINB8, Cytoplasmic antiproteinase 2, Peptidase inhibitor 8, PI8, Serpin B8, PI-8, CAP-2
Gene ID:	5271
NCBI Accession:	NP_001027018
UniProt:	P50452

Application Details

Application Notes:	Approved: WB (0.2 - 1 µg/mL) Usage: Western Blot: Suggested dilution at 1 µg/mL in 5 % skim milk / PBS buffer, and HRP conjugated anti-Rabbit IgG should be diluted in 1: 50,000 - 100,000 as secondary antibody.
Comment:	Target Species of Antibody: Human
Restrictions:	For Research Use only

Handling

Format:	Lyophilized
Reconstitution:	Distilled water
Concentration:	Lot specific
Buffer:	Lyophilized from PBS with 2 % sucrose
Handling Advice:	Avoid repeat freeze-thaw cycles.
Storage:	4 °C, -20 °C
Storage Comment:	Long term: -20°C, the use of 50% glycerol is recommended if storing aliquots in -20°C for long term use (up to 1 year) Short term (less than 1 week): 4°C. Avoid freeze-thaw cycles.

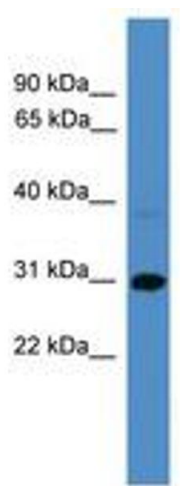


Image 1.