



[Go to Product page](#)

Datasheet for ABIN6745406
anti-RBM18 antibody (AA 101-150)

1 Image

Overview

Quantity:	100 µL
Target:	RBM18
Binding Specificity:	AA 101-150
Reactivity:	Human, Cow, Dog, Horse, Mouse, Pig, Rabbit, Rat, Monkey
Host:	Rabbit
Clonality:	Polyclonal
Conjugate:	This RBM18 antibody is un-conjugated
Application:	Western Blotting (WB)

Product Details

Immunogen:	Synthetic peptide located between aa101-150 of human RBM18 (Q96H35, NP_149108). Percent identity by BLAST analysis: Human, Chimpanzee, Gorilla, Orangutan, Gibbon, Monkey, Galago, Marmoset, Mouse, Rat, Elephant, Panda, Dog, Bovine, Rabbit, Horse, Pig, Opossum (100%), Guinea pig, Turkey, Zebra finch, Chicken, Platypus (92%). Type of Immunogen: Synthetic peptide
Specificity:	Human RBM18
Predicted Reactivity:	Percent identity by BLAST analysis: Human, Mouse, Rat, Dog, Bovine, Pig (100%) Chicken (92%).
Purification:	Immunoaffinity purified

Target Details

Target: RBM18

Alternative Name: RBM18 ([RBM18 Products](#))

Background: Name/Gene ID: RBM18

Synonyms: RBM18, RNA binding motif protein 18, RNA-binding motif protein 18

Gene ID: 92400

NCBI Accession: [NP_149108](#)

UniProt: [Q96H35](#)

Application Details

Application Notes: Approved: WB (0.2 - 1 µg/mL)

Usage: Western Blot: Suggested dilution at 1 µg/mL in 5 % skim milk / PBS buffer, and HRP conjugated anti-Rabbit IgG should be diluted in 1: 50,000 - 100,000 as secondary antibody.

Comment: Target Species of Antibody: Human

Restrictions: For Research Use only

Handling

Format: Lyophilized

Reconstitution: Distilled water

Concentration: Lot specific

Buffer: Lyophilized from PBS with 2 % sucrose

Handling Advice: Avoid repeat freeze-thaw cycles.

Storage: 4 °C, -20 °C

Storage Comment: Long term: -20°C, the use of 50% glycerol is recommended if storing aliquots in -20°C for long term use (up to 1 year)

Short term (less than 1 week): 4°C. Avoid freeze-thaw cycles.

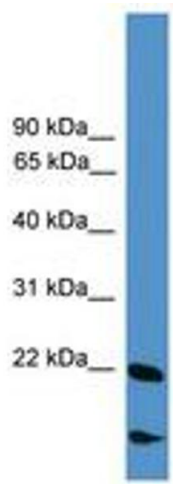


Image 1.