

Datasheet for ABIN6745409  
**anti-Cyclin H antibody (AA 50-99)**



[Go to Product page](#)

1 Image

## Overview

Quantity:	100 µL
Target:	Cyclin H (CCNH)
Binding Specificity:	AA 50-99
Reactivity:	Human, Mouse, Rat, Pig, Guinea Pig, Rabbit, Monkey, Horse, Dog, Cow, Bat, Hamster
Host:	Rabbit
Clonality:	Polyclonal
Conjugate:	This Cyclin H antibody is un-conjugated
Application:	Western Blotting (WB)

## Product Details

Immunogen:	Synthetic peptide located between aa50-99 of human CCNH (P51946, NP_001230). Percent identity by BLAST analysis: Human, Chimpanzee, Gorilla, Orangutan, Gibbon, Monkey, Galago, Marmoset, Mouse, Rat, Hamster, Elephant, Panda, Dog, Bovine, Bat, Rabbit, Horse, Pig, Guinea pig (100%), Opossum, Turkey, Chicken, Platypus, Lizard, Xenopus (90%).  Type of Immunogen: Synthetic peptide
Specificity:	Human CCNH / Cyclin H
Predicted Reactivity:	Percent identity by BLAST analysis: Human, Mouse, Rat, Dog, Bovine, Rabbit, Horse, Pig, Guinea pig (100%) Chicken, Xenopus (90%).
Purification:	Immunoaffinity purified

## Target Details

---

Target:	Cyclin H (CCNH)
Alternative Name:	CCNH / Cyclin H ( <a href="#">CCNH Products</a> )
Background:	Name/Gene ID: CCNH  Synonyms: CCNH, Cyclin H, p34, p37, CAK, CAK complex subunit, Cyclin-H, MO15-associated protein
Gene ID:	902
NCBI Accession:	<a href="#">NP_001230</a>
UniProt:	<a href="#">P51946</a>
Pathways:	<a href="#">Cell Division Cycle</a> , <a href="#">Mitotic G1-G1/S Phases</a> , <a href="#">M Phase</a>

## Application Details

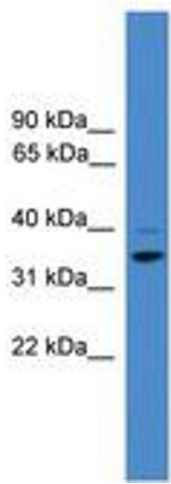
---

Application Notes:	Approved: WB (0.2 - 1 µg/mL)  Usage: Western Blot: Suggested dilution at 1 µg/mL in 5 % skim milk / PBS buffer, and HRP conjugated anti-Rabbit IgG should be diluted in 1: 50,000 - 100,000 as secondary antibody.
Comment:	Target Species of Antibody: Human
Restrictions:	For Research Use only

## Handling

---

Format:	Lyophilized
Reconstitution:	Distilled water
Concentration:	Lot specific
Buffer:	Lyophilized from PBS with 2 % sucrose
Handling Advice:	Avoid repeat freeze-thaw cycles.
Storage:	4 °C,-20 °C
Storage Comment:	Long term: -20°C, the use of 50% glycerol is recommended if storing aliquots in -20°C for long term use (up to 1 year)  Short term (less than 1 week): 4°C. Avoid freeze-thaw cycles.



**Image 1.**