



[Go to Product page](#)

Datasheet for ABIN6745423  
**anti-EIF4E2 antibody (AA 60-109)**

1 Image

Overview

Quantity:	100 µL
Target:	EIF4E2
Binding Specificity:	AA 60-109
Reactivity:	Human, Mouse, Rat, Dog, Cow, Guinea Pig, Horse, Rabbit, Zebrafish (Danio rerio), Monkey, Bat, Chicken, Pig, Xenopus laevis
Host:	Rabbit
Clonality:	Polyclonal
Conjugate:	This EIF4E2 antibody is un-conjugated
Application:	Western Blotting (WB)

Product Details

Immunogen:	Synthetic peptide located between aa60-109 of human EIF4E2 (O60573, NP_004837). Percent identity by BLAST analysis: Human, Chimpanzee, Orangutan, Gibbon, Monkey, Marmoset, Mouse, Rat, Elephant, Dog, Bovine, Bat, Rabbit, Horse, Pig, Opossum, Guinea pig, Turkey, Chicken, Xenopus (100%), Gorilla, Salmon, Stickleback, Zebrafish (85%).  Type of Immunogen: Synthetic peptide
Specificity:	Human EIF4E2
Predicted Reactivity:	Percent identity by BLAST analysis: Human, Mouse, Rat, Dog, Bovine, Rabbit, Pig, Guinea pig, Chicken (100%) Zebrafish (85%).
Purification:	Immunoaffinity purified

## Target Details

---

Target:	EIF4E2
Alternative Name:	EIF4E2 / IF4e ( <a href="#">EIF4E2 Products</a> )
Background:	Name/Gene ID: EIF4E2  Synonyms: EIF4E2, 4E-LP, 4EHP, EIF4E-like cap-binding protein, EIF-4E type 2, EIF4EL3, MRNA cap-binding protein 4EHP, EIF4E type 2, EIF4E-like protein 4E-LP, IF4e
Gene ID:	9470
NCBI Accession:	<a href="#">NP_004837</a>
UniProt:	<a href="#">O60573</a>
Pathways:	<a href="#">SARS-CoV-2 Protein Interactome</a>

## Application Details

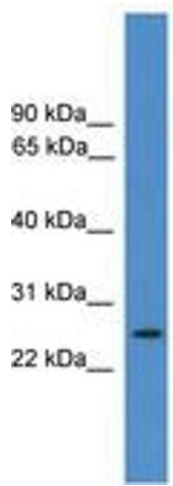
---

Application Notes:	Approved: WB (0.2 - 1 µg/mL)  Usage: Western Blot: Suggested dilution at 1 µg/mL in 5 % skim milk / PBS buffer, and HRP conjugated anti-Rabbit IgG should be diluted in 1: 50,000 - 100,000 as secondary antibody.
Comment:	Target Species of Antibody: Human
Restrictions:	For Research Use only

## Handling

---

Format:	Lyophilized
Reconstitution:	Distilled water
Concentration:	Lot specific
Buffer:	Lyophilized from PBS with 2 % sucrose
Handling Advice:	Avoid repeat freeze-thaw cycles.
Storage:	4 °C,-20 °C
Storage Comment:	Long term: -20°C, the use of 50% glycerol is recommended if storing aliquots in -20°C for long term use (up to 1 year)  Short term (less than 1 week): 4°C. Avoid freeze-thaw cycles.



**Image 1.**