

Datasheet for ABIN6745431
anti-LAG3 antibody (C-Term)



[Go to Product page](#)

1 Image

Overview

Quantity:	100 µL
Target:	LAG3
Binding Specificity:	C-Term
Reactivity:	Human, Mouse, Rat, Cow, Drosophila melanogaster
Host:	Rabbit
Clonality:	Polyclonal
Conjugate:	This LAG3 antibody is un-conjugated
Application:	Western Blotting (WB)

Product Details

Immunogen:	Synthetic peptide from C-Terminus of human LAG3 (P18627, NP_002277). Percent identity by BLAST analysis: Human, Gorilla, Mouse, Rat, Bovine, Lizard, Seabass, Drosophila (100%). Type of Immunogen: Synthetic peptide
Specificity:	Human LAG3 / LAG-3
Predicted Reactivity:	Percent identity by BLAST analysis: Human (100%).
Purification:	Immunoaffinity purified

Target Details

Target:	LAG3
Alternative Name:	LAG3 / LAG-3 / CD223 (LAG3 Products)

Target Details

Background:	Name/Gene ID: LAG3
	Synonyms: LAG3, CD223 antigen, LAG-3, Protein FDC, CD223, FDC, Lymphocyte-activation gene 3
Gene ID:	3902
NCBI Accession:	NP_002277
UniProt:	P18627
Pathways:	Regulation of Leukocyte Mediated Immunity , Positive Regulation of Immune Effector Process , Cancer Immune Checkpoints

Application Details

Application Notes:	Approved: WB (0.2 - 1 µg/mL)
	Usage: Western Blot: Suggested dilution at 1 µg/mL in 5 % skim milk / PBS buffer, and HRP conjugated anti-Rabbit IgG should be diluted in 1: 50,000 - 100,000 as secondary antibody.
Comment:	Target Species of Antibody: Human
Restrictions:	For Research Use only

Handling

Format:	Lyophilized
Reconstitution:	Distilled water
Concentration:	Lot specific
Buffer:	Lyophilized from PBS with 2 % sucrose
Handling Advice:	Avoid repeat freeze-thaw cycles.
Storage:	4 °C, -20 °C
Storage Comment:	Long term: -20°C, the use of 50% glycerol is recommended if storing aliquots in -20°C for long term use (up to 1 year) Short term (less than 1 week): 4°C. Avoid freeze-thaw cycles.

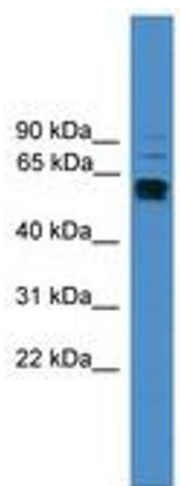


Image 1.