

Datasheet for ABIN6745432  
**anti-TGFB3 antibody (AA 150-199)**[Go to Product page](#)

## 1 Image

## Overview

Quantity:	100 µL
Target:	TGFB3
Binding Specificity:	AA 150-199
Reactivity:	Human, Cow, Monkey, Horse, Rabbit, Sheep, Bat
Host:	Rabbit
Clonality:	Polyclonal
Conjugate:	This TGFB3 antibody is un-conjugated
Application:	Western Blotting (WB)

## Product Details

Immunogen:	Synthetic peptide located between aa150-199 of human TGFB3 (P10600, NP_003230). Percent identity by BLAST analysis: Human, Chimpanzee, Gorilla, Gibbon, Monkey, Galago, Marmoset, Elephant, Bat, Rabbit, Horse, Platypus (100%), Mouse, Rat, Hamster, Dog, Pig, Guinea pig, Turkey, Zebra finch, Chicken (92%), Opossum (85%), Sheep, Bovine (84%).  Type of Immunogen: Synthetic peptide
Specificity:	Human TGFB3
Predicted Reactivity:	Percent identity by BLAST analysis: Human, Rabbit, Horse (100%) Mouse, Rat, Dog, Pig, Chicken (92%) Sheep, Bovine (84%).
Purification:	Immunoaffinity purified

## Target Details

Target:	TGFB3
Alternative Name:	TGFB3 ( <a href="#">TGFB3 Products</a> )
Background:	Name/Gene ID: TGFB3 Family: TGF beta  Synonyms: TGFB3, ARVD, TGF Beta 3, TGF-beta-3, TGF-beta3
Gene ID:	7043
NCBI Accession:	<a href="#">NP_003230</a>
UniProt:	<a href="#">P10600</a>
Pathways:	<a href="#">Cell-Cell Junction Organization</a> , <a href="#">Production of Molecular Mediator of Immune Response</a> , <a href="#">Protein targeting to Nucleus</a>

## Application Details

Application Notes:	Approved: WB (0.2 - 1 µg/mL)  Usage: Western Blot: Suggested dilution at 1 µg/mL in 5 % skim milk / PBS buffer, and HRP conjugated anti-Rabbit IgG should be diluted in 1: 50,000 - 100,000 as secondary antibody.
Comment:	Target Species of Antibody: Human
Restrictions:	For Research Use only

## Handling

Format:	Lyophilized
Reconstitution:	Distilled water
Concentration:	Lot specific
Buffer:	Lyophilized from PBS with 2 % sucrose
Handling Advice:	Avoid repeat freeze-thaw cycles.
Storage:	4 °C, -20 °C
Storage Comment:	Long term: -20°C, the use of 50% glycerol is recommended if storing aliquots in -20°C for long term use (up to 1 year) Short term (less than 1 week): 4°C. Avoid freeze-thaw cycles.

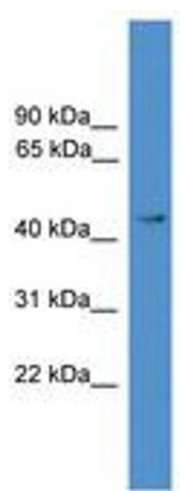


Image 1.