

Datasheet for ABIN6745436
anti-CSTB antibody (AA 20-69)



[Go to Product page](#)

1 Image

Overview

Quantity:	100 µL
Target:	CSTB
Binding Specificity:	AA 20-69
Reactivity:	Human, Cow, Sheep, Monkey
Host:	Rabbit
Clonality:	Polyclonal
Conjugate:	This CSTB antibody is un-conjugated
Application:	Western Blotting (WB)

Product Details

Immunogen:	Synthetic peptide located between aa20-69 of human CSTB (P04080, NP_000091). Percent identity by BLAST analysis: Human, Chimpanzee, Gorilla, Orangutan, Gibbon, Monkey, Galago, Marmoset, Sheep, Elephant, Bovine (100%), Horse, Pig (92%). Type of Immunogen: Synthetic peptide
Specificity:	Human CSTB / Stefin B
Predicted Reactivity:	Percent identity by BLAST analysis: Human, Bovine (100%) Pig (92%).
Purification:	Immunoaffinity purified

Target Details

Target:	CSTB
---------	------

Target Details

Alternative Name:	CSTB / Cystatin B / Stefin B (CSTB Products)
Background:	Name/Gene ID: CSTB Synonyms: CSTB, CPI-B, EPM1, EPM1A, PME, Stefin B, Stefin-B, ULD, Cystatin b, Cystatin B (stefin B), Cystatin-B, STFB
Gene ID:	1476
NCBI Accession:	NP_000091
UniProt:	P04080
Pathways:	Response to Water Deprivation

Application Details

Application Notes:	Approved: WB (0.2 - 1 µg/mL) Usage: Western Blot: Suggested dilution at 1 µg/mL in 5 % skim milk / PBS buffer, and HRP conjugated anti-Rabbit IgG should be diluted in 1: 50,000 - 100,000 as secondary antibody.
Comment:	Target Species of Antibody: Human
Restrictions:	For Research Use only

Handling

Format:	Lyophilized
Reconstitution:	Distilled water
Concentration:	Lot specific
Buffer:	Lyophilized from PBS with 2 % sucrose
Handling Advice:	Avoid repeat freeze-thaw cycles.
Storage:	4 °C, -20 °C
Storage Comment:	Long term: -20°C, the use of 50% glycerol is recommended if storing aliquots in -20°C for long term use (up to 1 year) Short term (less than 1 week): 4°C. Avoid freeze-thaw cycles.

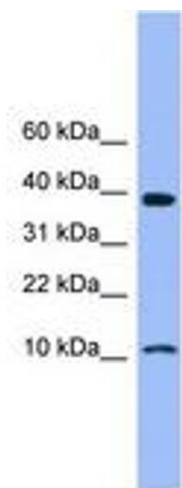


Image 1.