



[Go to Product page](#)

Datasheet for ABIN6745447
anti-GIPC3 antibody (AA 221-270)

1 Image

Overview

Quantity:	100 µL
Target:	GIPC3
Binding Specificity:	AA 221-270
Reactivity:	Human, Guinea Pig
Host:	Rabbit
Clonality:	Polyclonal
Conjugate:	This GIPC3 antibody is un-conjugated
Application:	Western Blotting (WB)

Product Details

Immunogen:	Synthetic peptide located between aa221-270 of human GIPC3 (Q8TF64, NP_573568). Percent identity by BLAST analysis: Human, Gorilla, Gibbon, Marmoset, Elephant (100%), Monkey, Galago, Dog, Bat (92%), Opossum, Guinea pig (84%). Type of Immunogen: Synthetic peptide
Specificity:	Human GIPC3
Predicted Reactivity:	Percent identity by BLAST analysis: Human (100%) Dog (92%) Guinea pig (84%).
Purification:	Immunoaffinity purified

Target Details

Target:	GIPC3
---------	-------

Target Details

Alternative Name:	GIPC3 (GIPC3 Products)
Background:	Name/Gene ID: GIPC3 Synonyms: GIPC3, C19orf64, DFNB15, DFNB72, DFNB95
Gene ID:	126326
NCBI Accession:	NP_573568
UniProt:	Q8TF64

Application Details

Application Notes:	Approved: WB (0.2 - 1 µg/mL) Usage: Western Blot: Suggested dilution at 1 µg/mL in 5 % skim milk / PBS buffer, and HRP conjugated anti-Rabbit IgG should be diluted in 1: 50,000 - 100,000 as secondary antibody.
Comment:	Target Species of Antibody: Human
Restrictions:	For Research Use only

Handling

Format:	Lyophilized
Reconstitution:	Distilled water
Concentration:	Lot specific
Buffer:	Lyophilized from PBS with 2 % sucrose
Handling Advice:	Avoid repeat freeze-thaw cycles.
Storage:	4 °C,-20 °C
Storage Comment:	Long term: -20°C, the use of 50% glycerol is recommended if storing aliquots in -20°C for long term use (up to 1 year) Short term (less than 1 week): 4°C. Avoid freeze-thaw cycles.

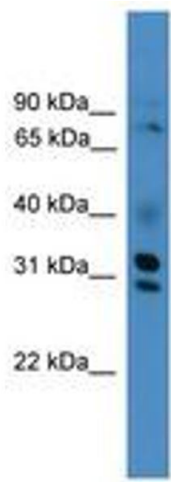


Image 1.